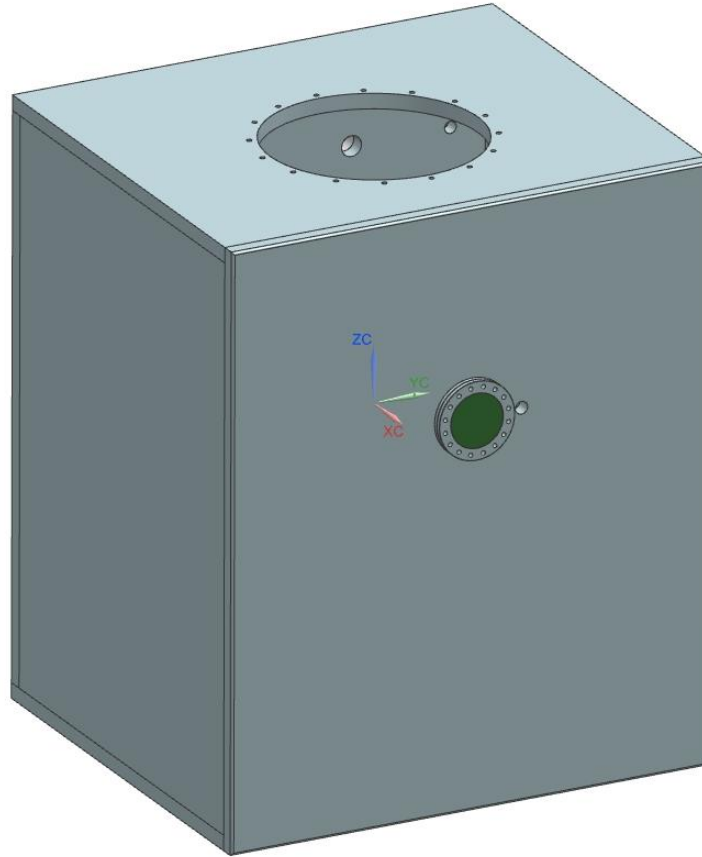


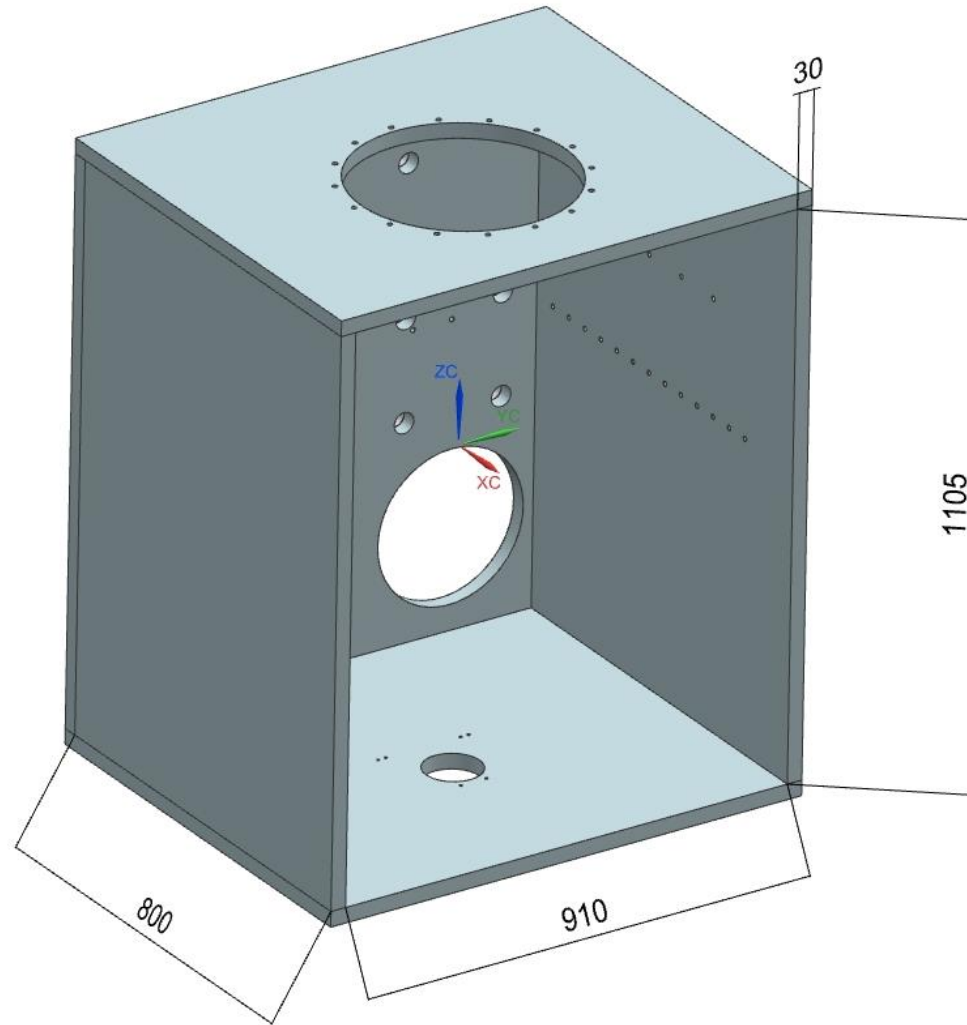
VACUUM CHAMBER
And
PLUMBING LINE
ASSEMBLY

VACUUM CHAMBER ISOMETRIC VIEW

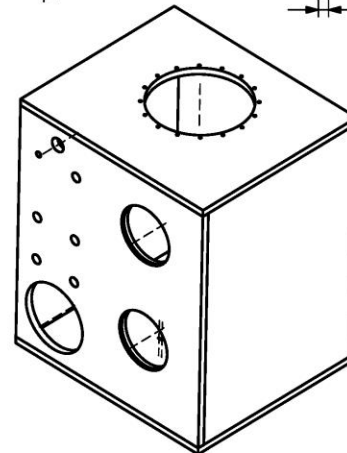
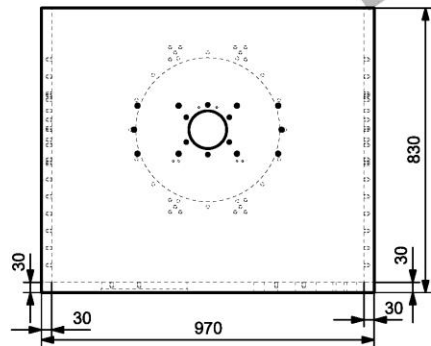
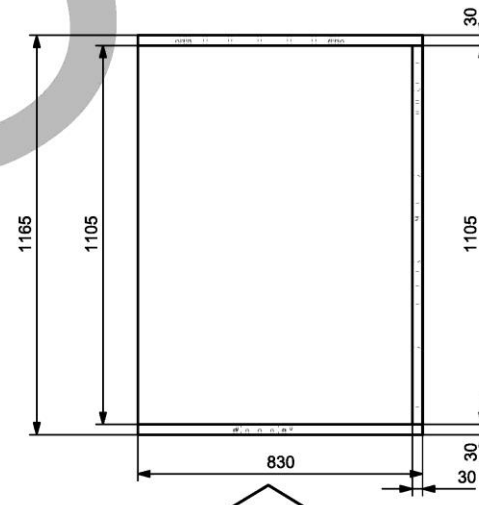
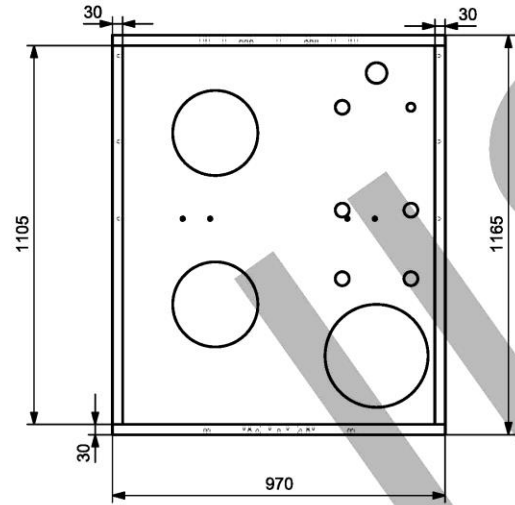
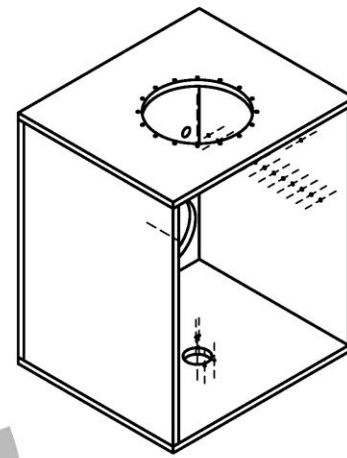
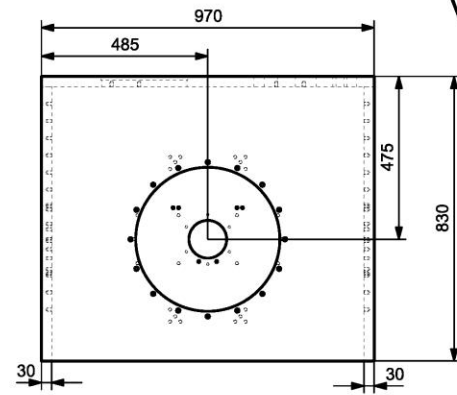


VACUUM CHAMBER DIMENSIONS

HEIGHT : 1105mm
WIDTH : 910mm
DEPTH : 800mm
WALL THICKNESS : 30mm
VOLUME : 0.8m³



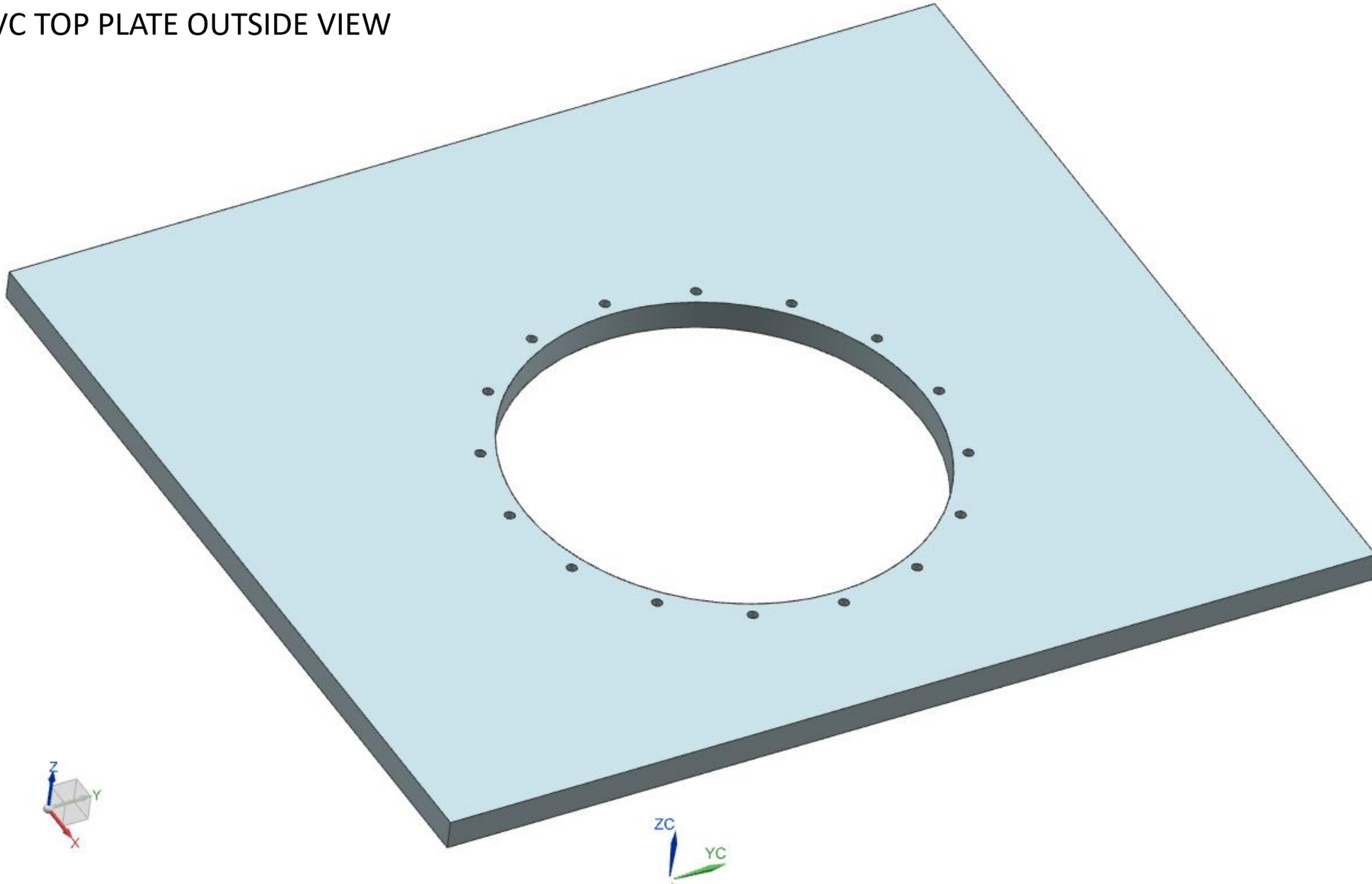
VACUUM CHAMBER DIMENSIONS



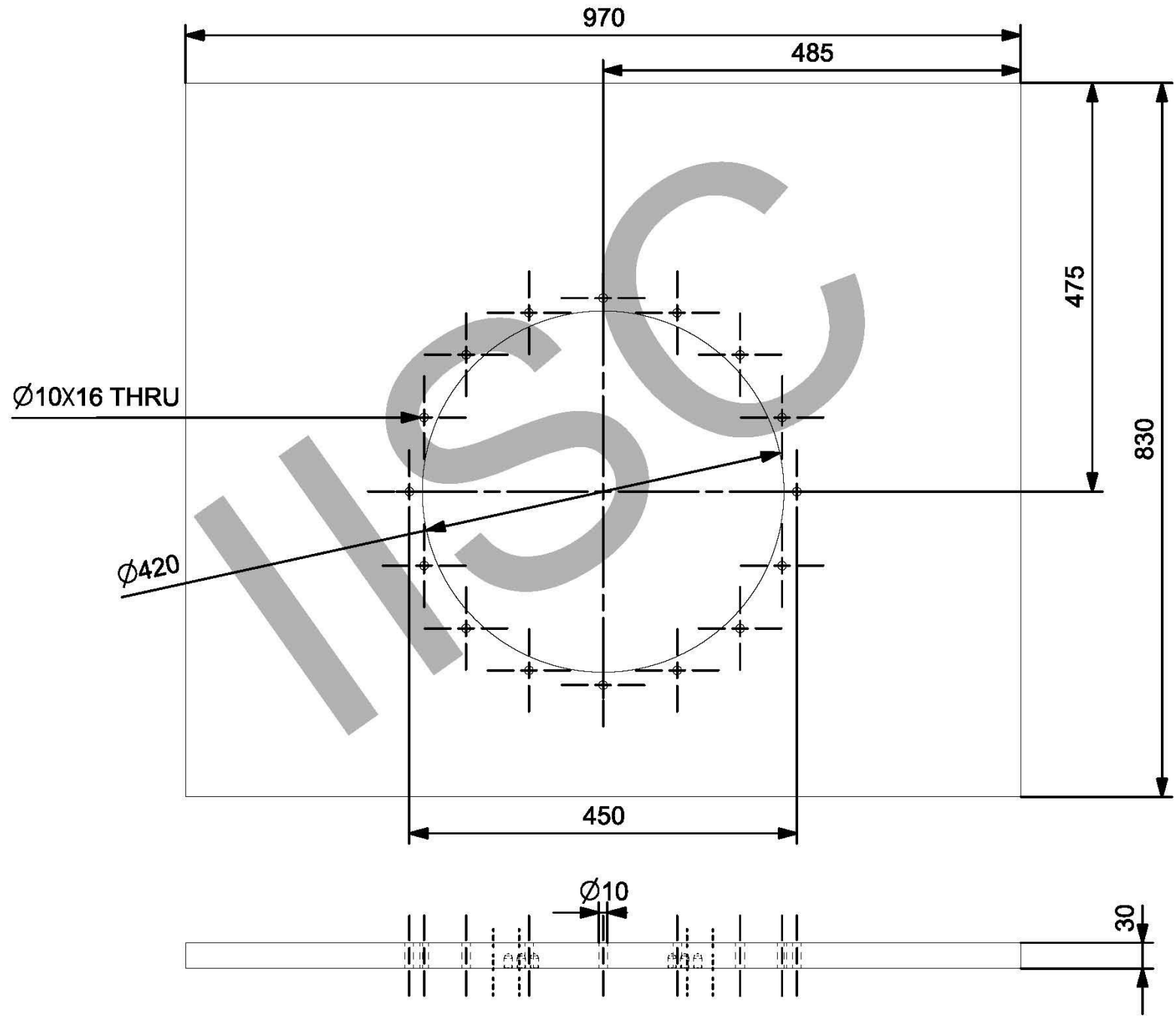
Vacuum Chamber Inside Dimensions
 Height = 1105mm
 Width = 910mm
 Depth = 800mm

ALL DIMENSIONS ARE IN MM

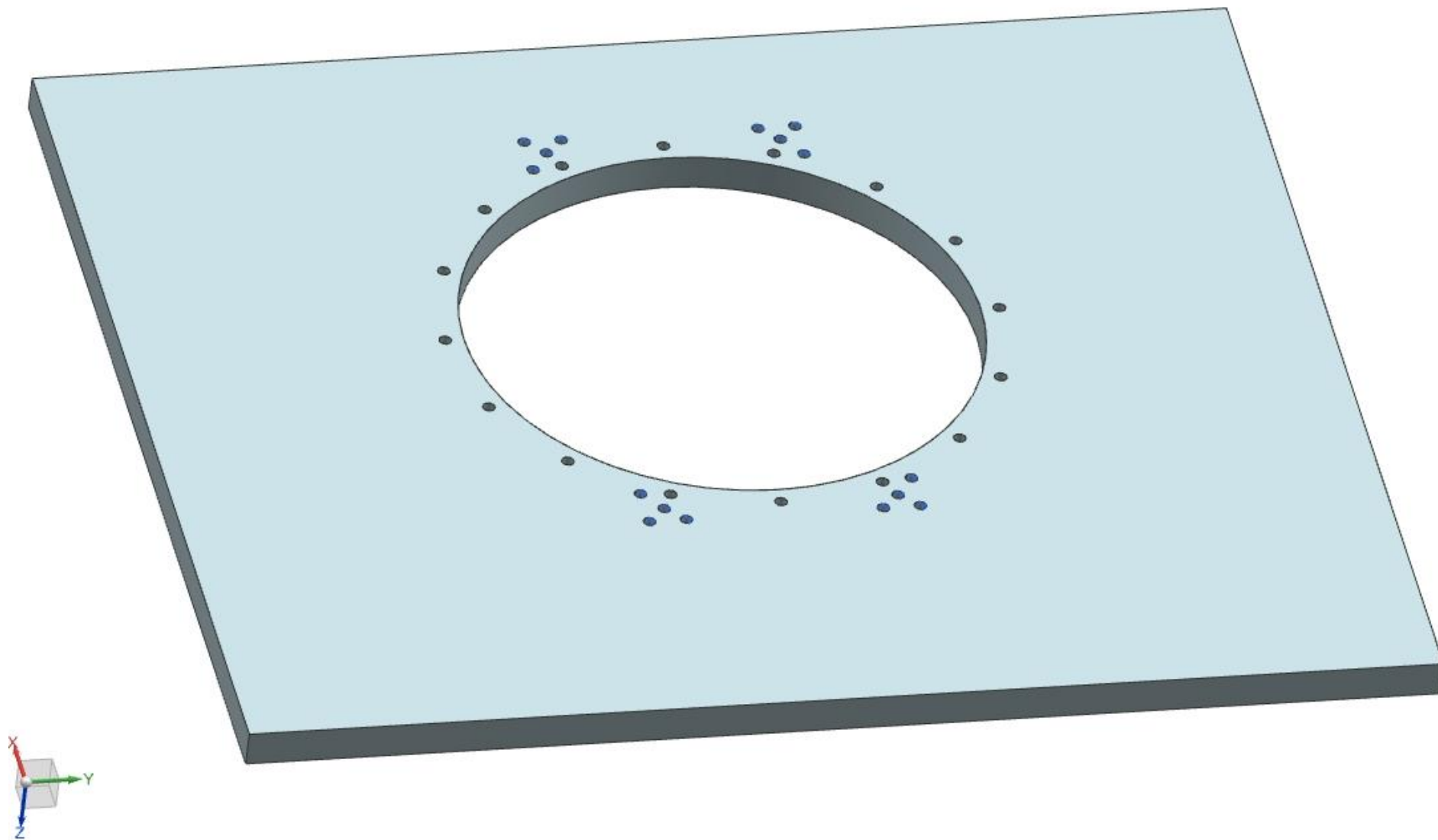
VC TOP PLATE OUTSIDE VIEW



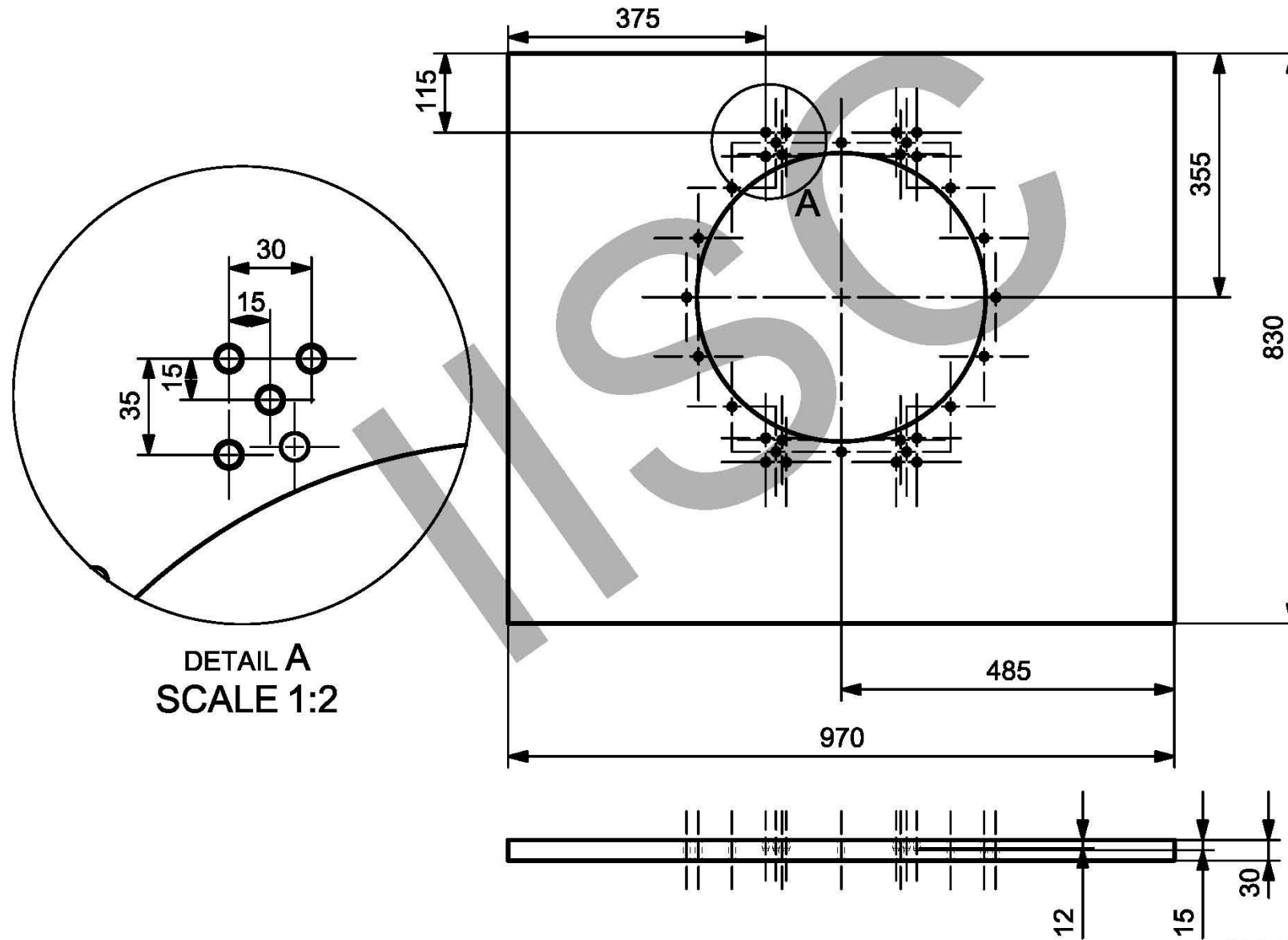
VACUUM CHAMBER TOP WALL OUTSIDE DIMENSIONS



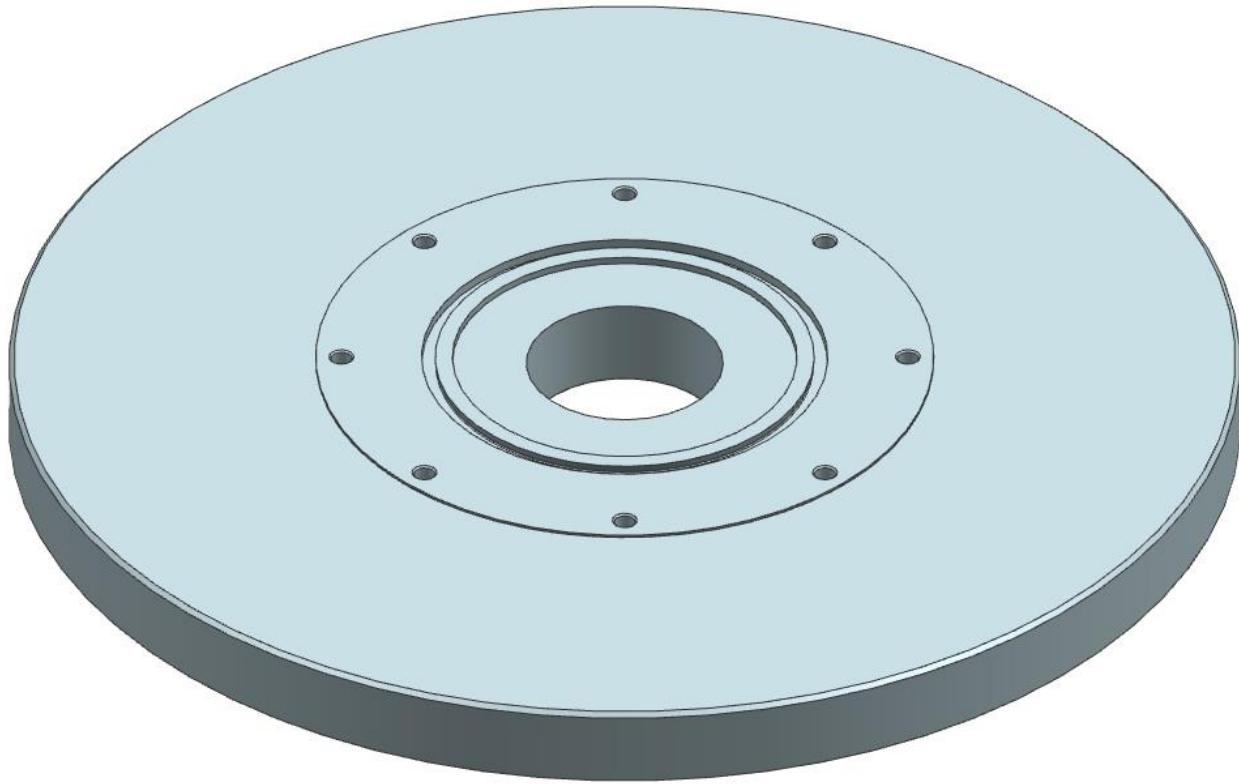
VC TOP PLATE INSIDE VIEW



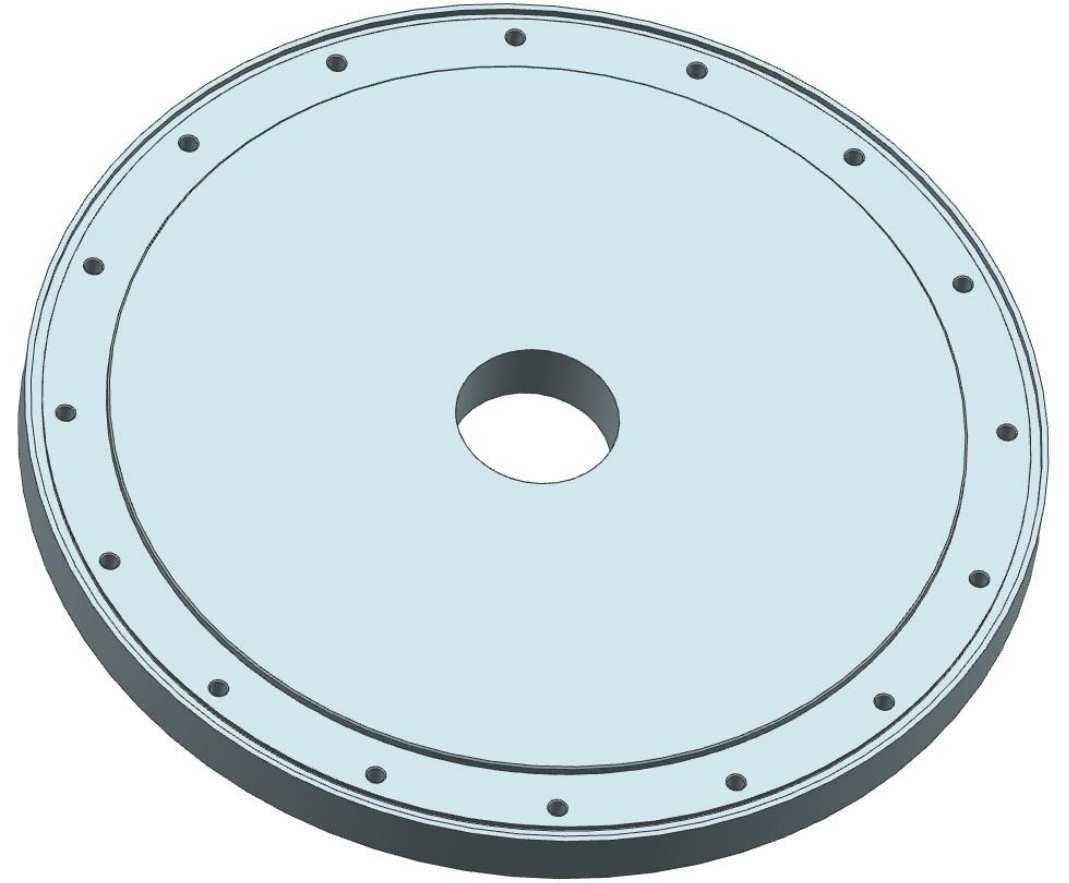
VACUUM CHAMBER TOP WALL INSIDE DIMENSIONS



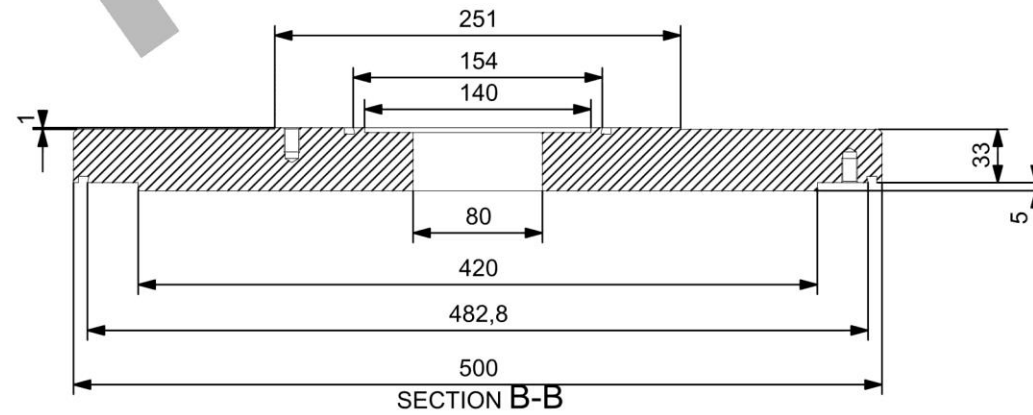
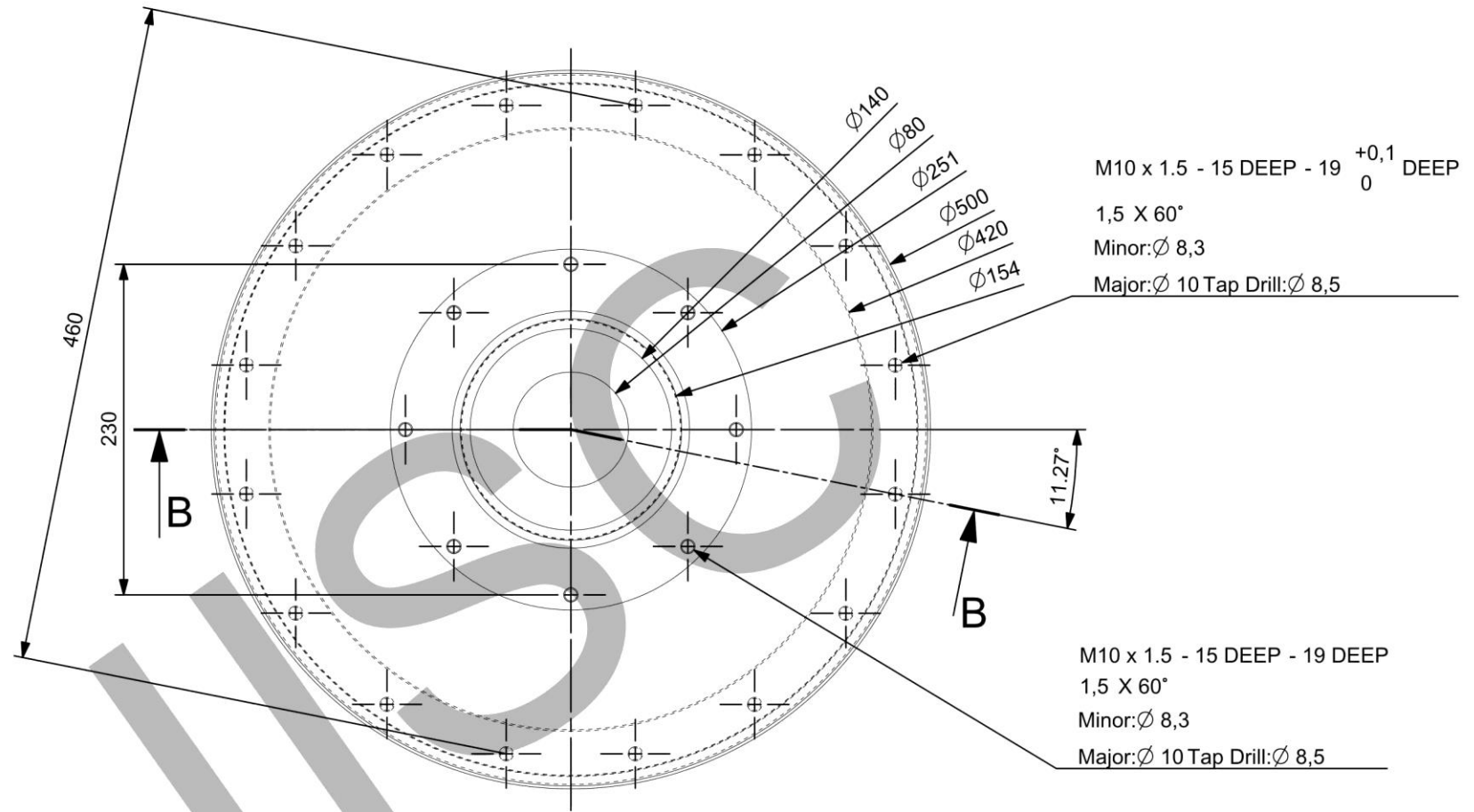
VC Top plate Flange (Custom Design)



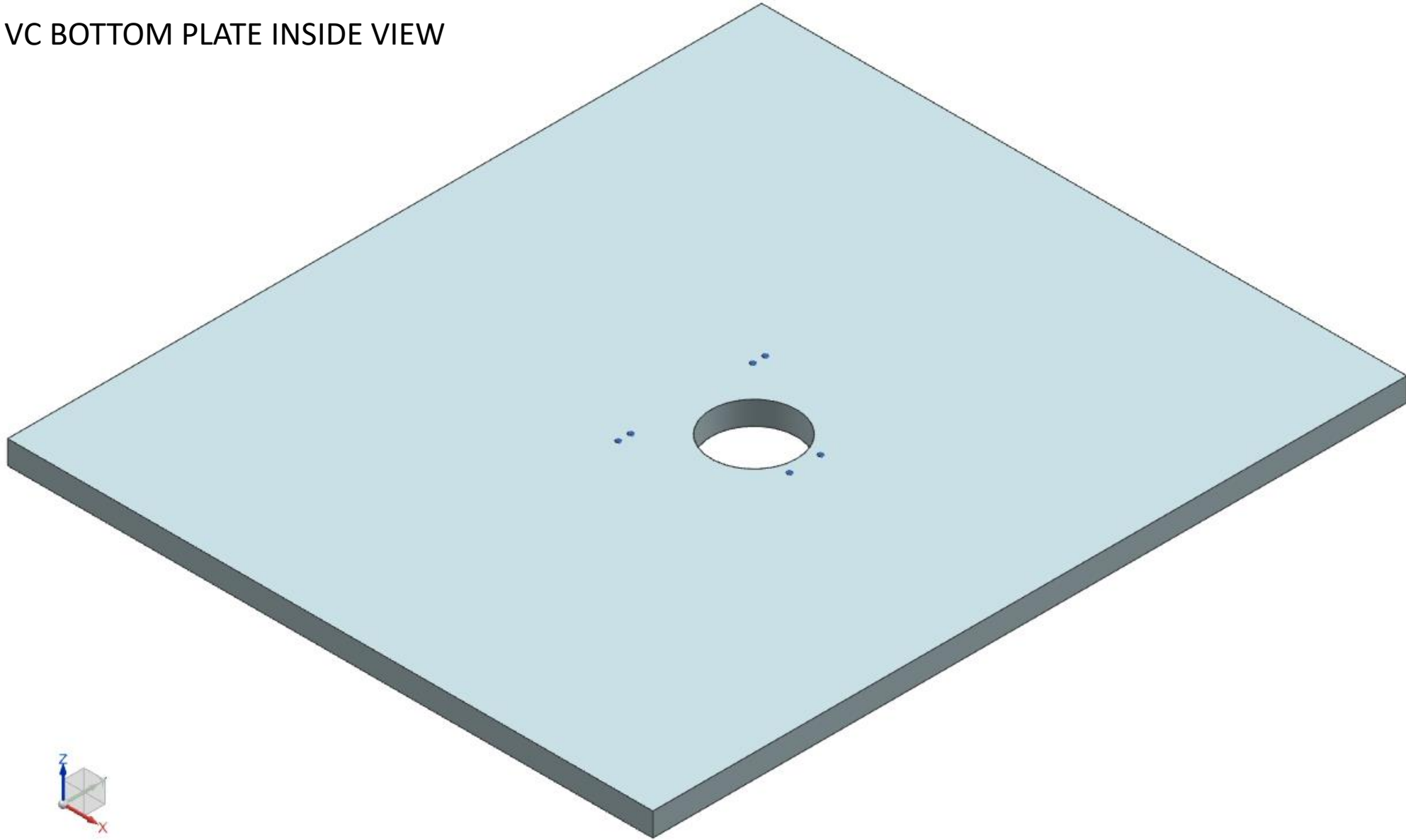
Top View



Bottom View



VC BOTTOM PLATE INSIDE VIEW



Technical drawing of a mechanical part, showing a top view and a side view.

Top View Dimensions:

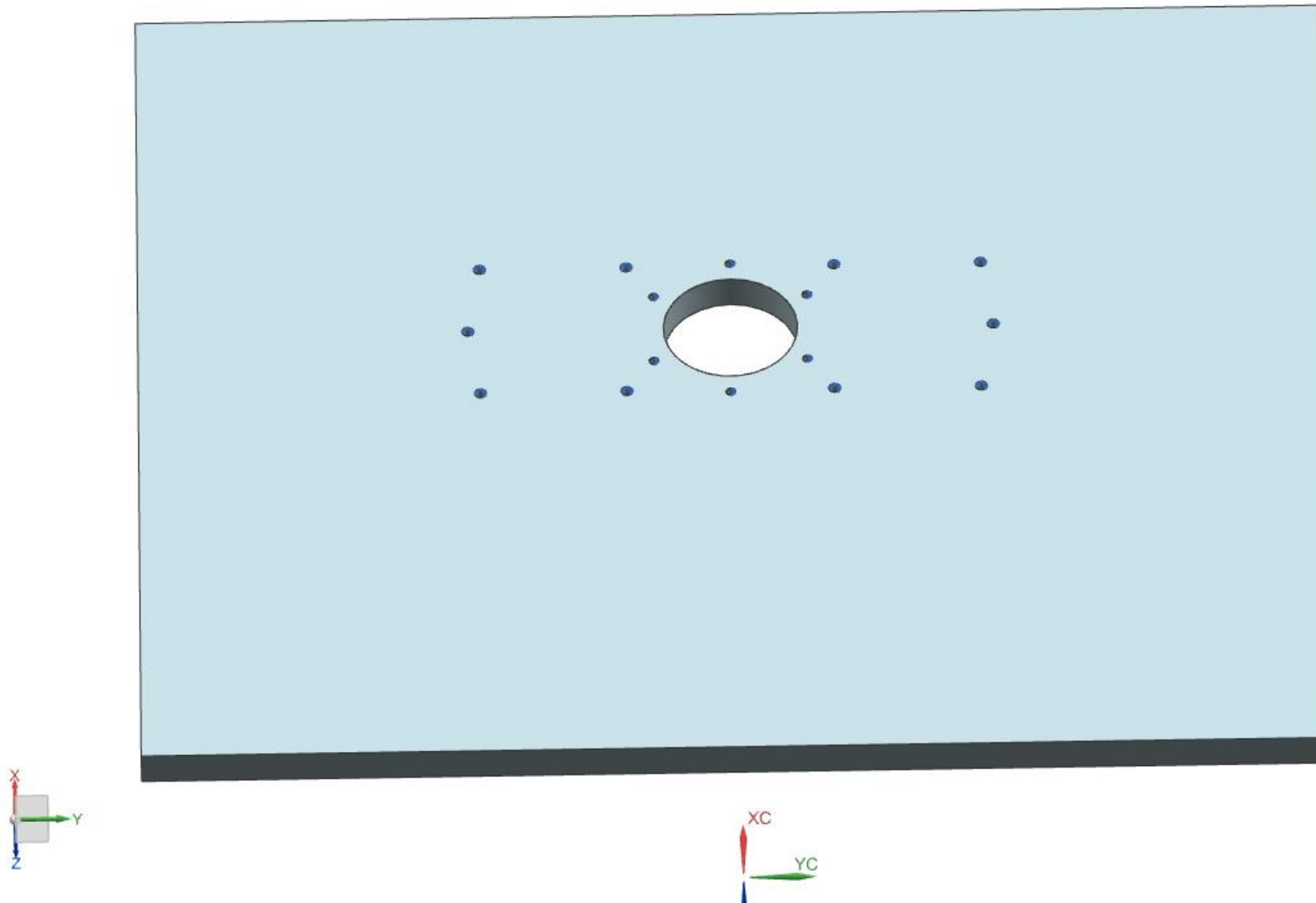
- Overall width: 970
- Overall height: 830
- Distance from the left edge to the center of the circular feature: 485
- Distance from the top edge to the center of the circular feature: 475

Side View Dimensions:

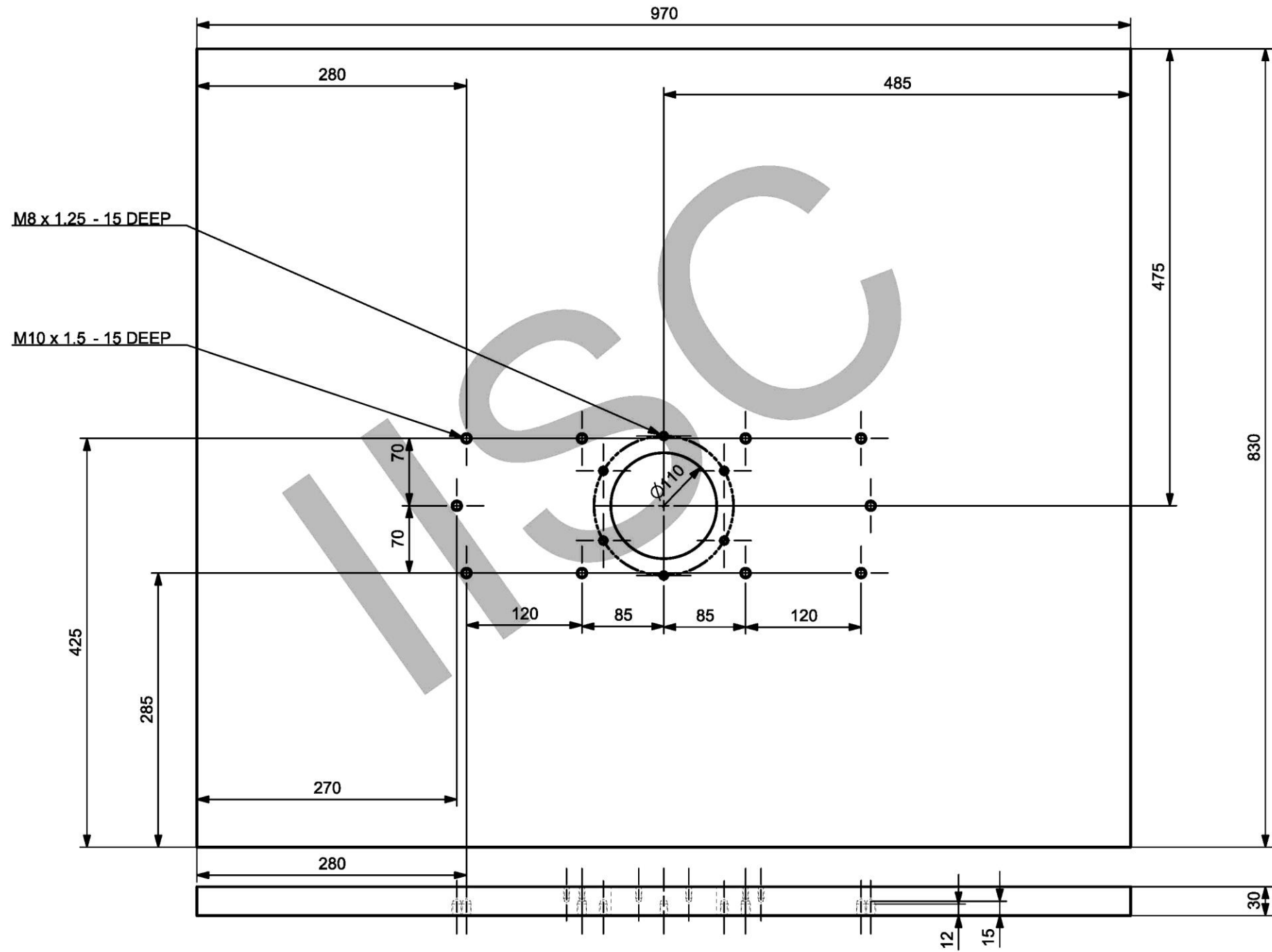
- Overall height: 30
- Height of the central section: 15
- Height of the bottom section: 12

The drawing includes a large 'A' watermark.

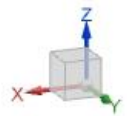
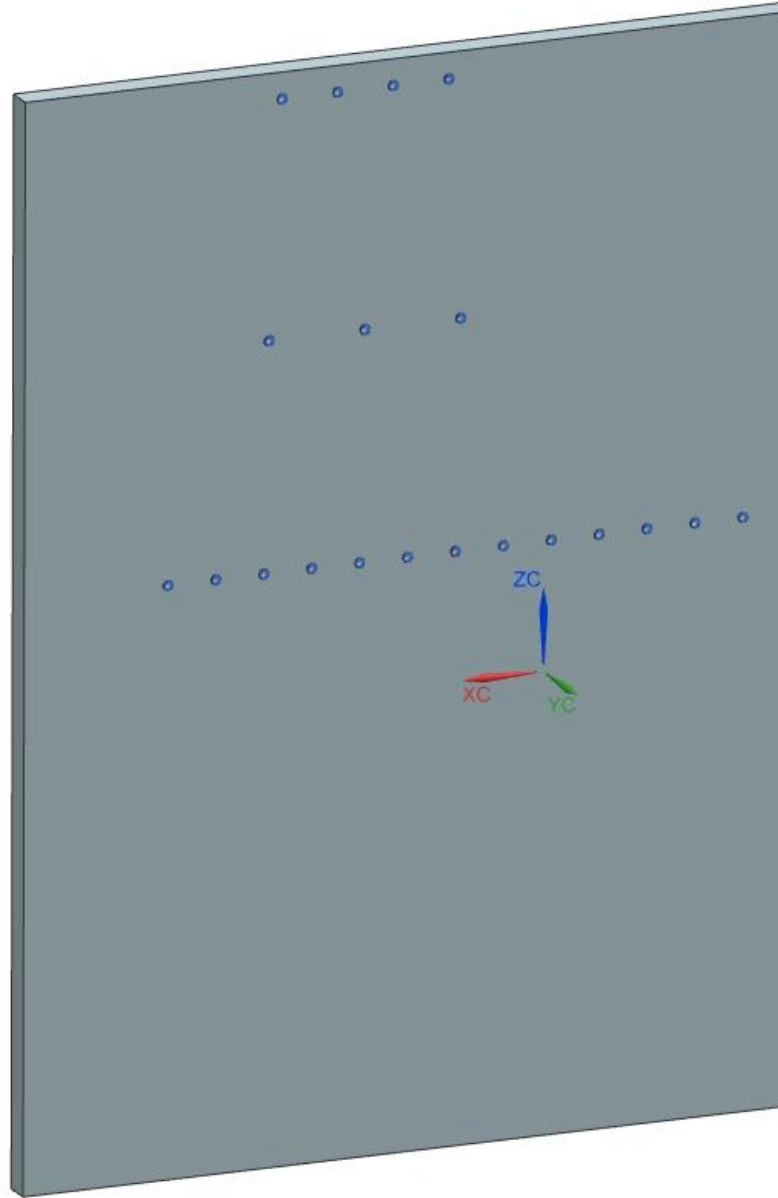
VC BOTTOM PLATE OUTSIDE VIEW



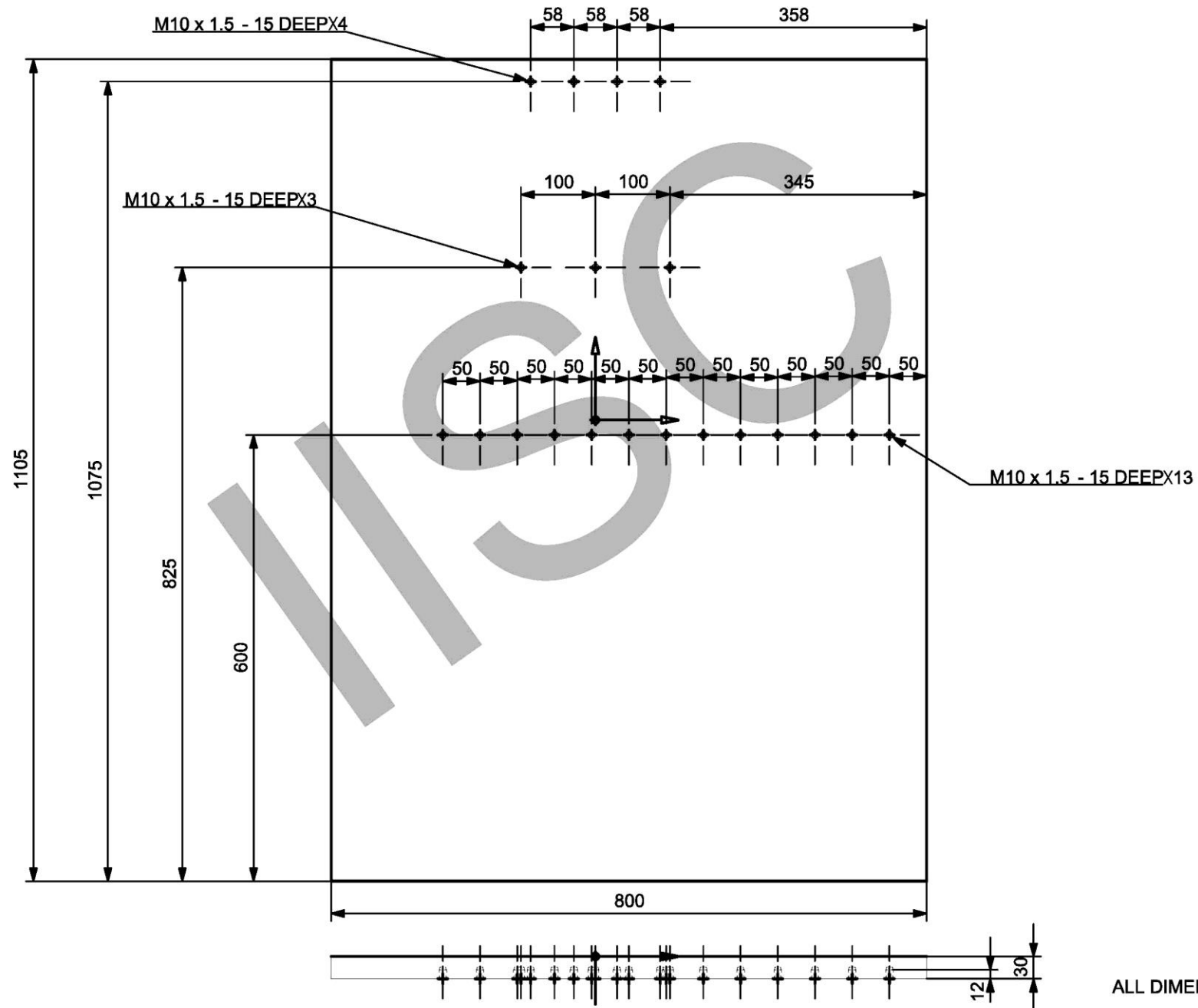
VCAUUM CHAMBER BOTTOM WALL OUTSIDE DIMENSIONS



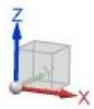
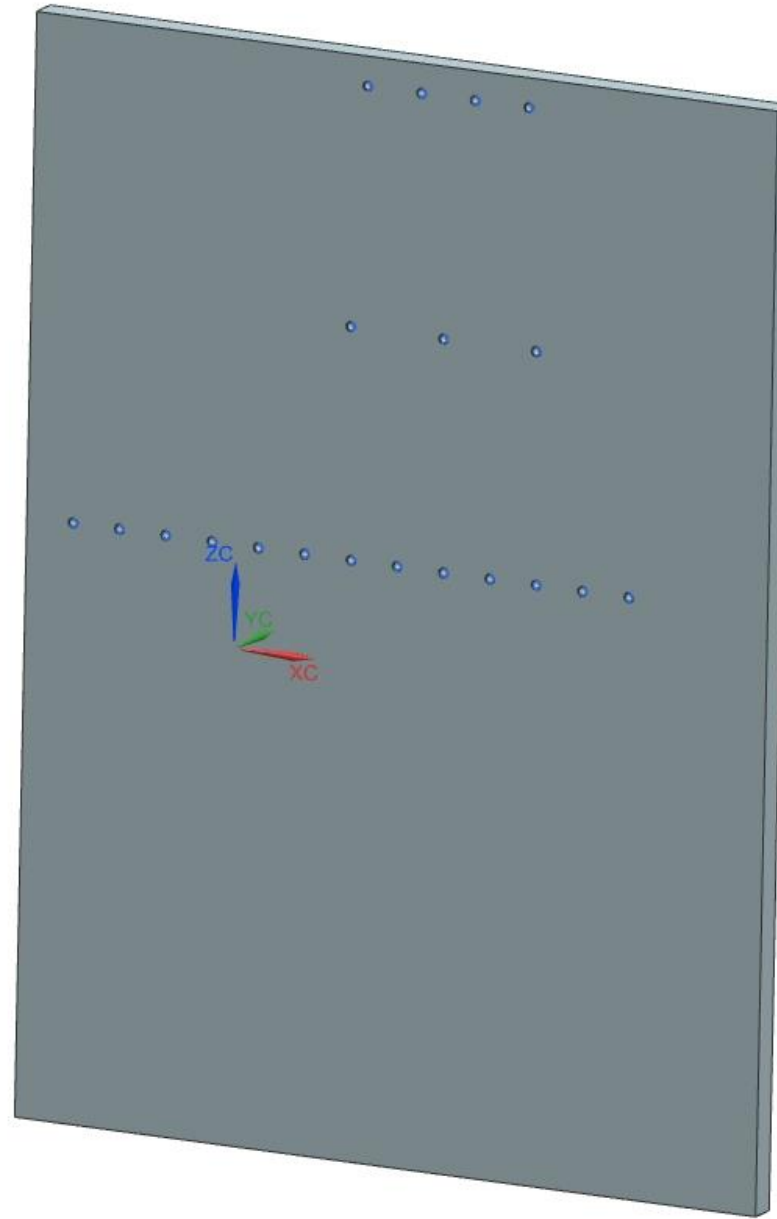
VC LEFT SIDE PLATE



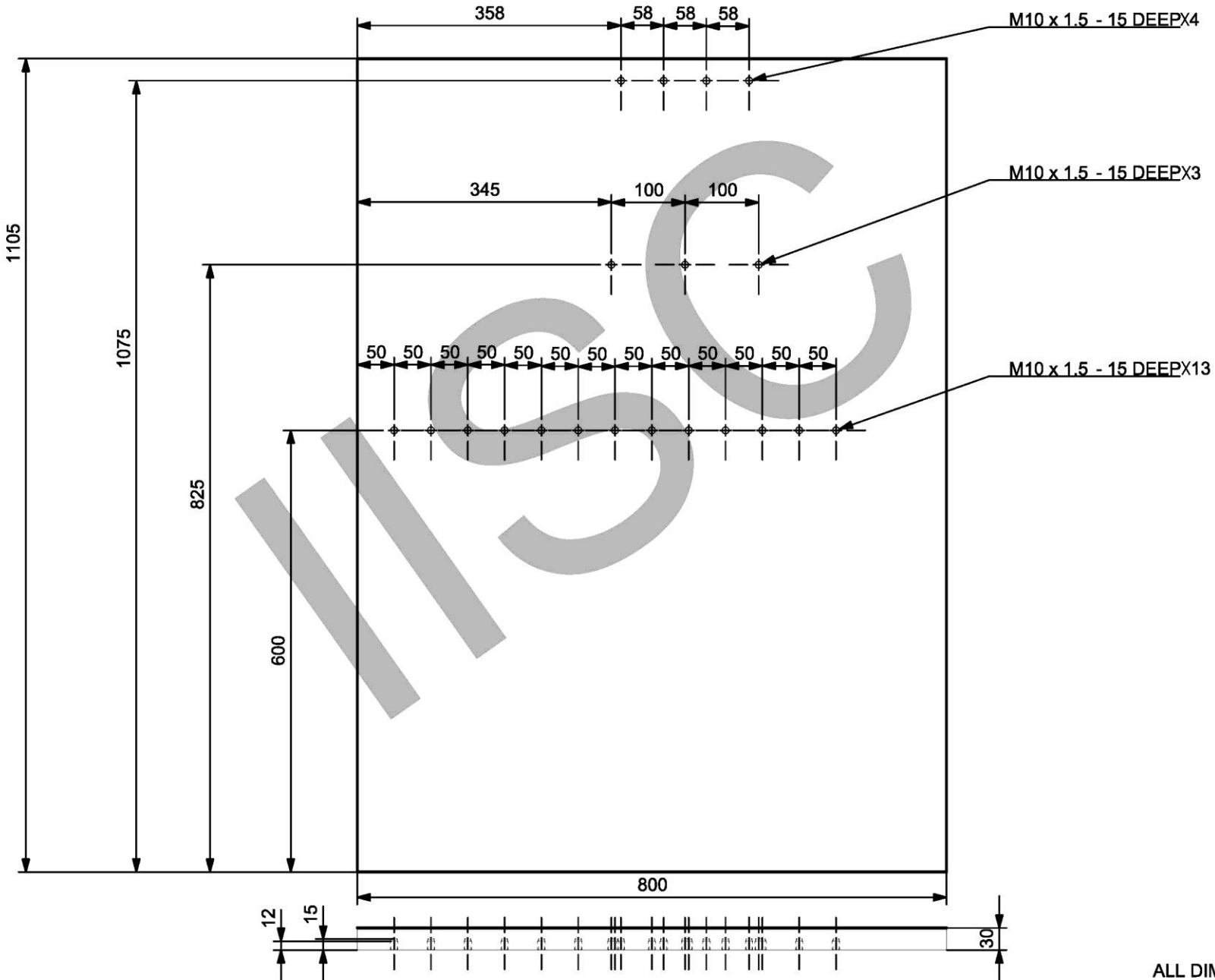
Vacuum Chamber Leftside wall INSIDE Dimensions



VC RIGHT SIDE PLATE

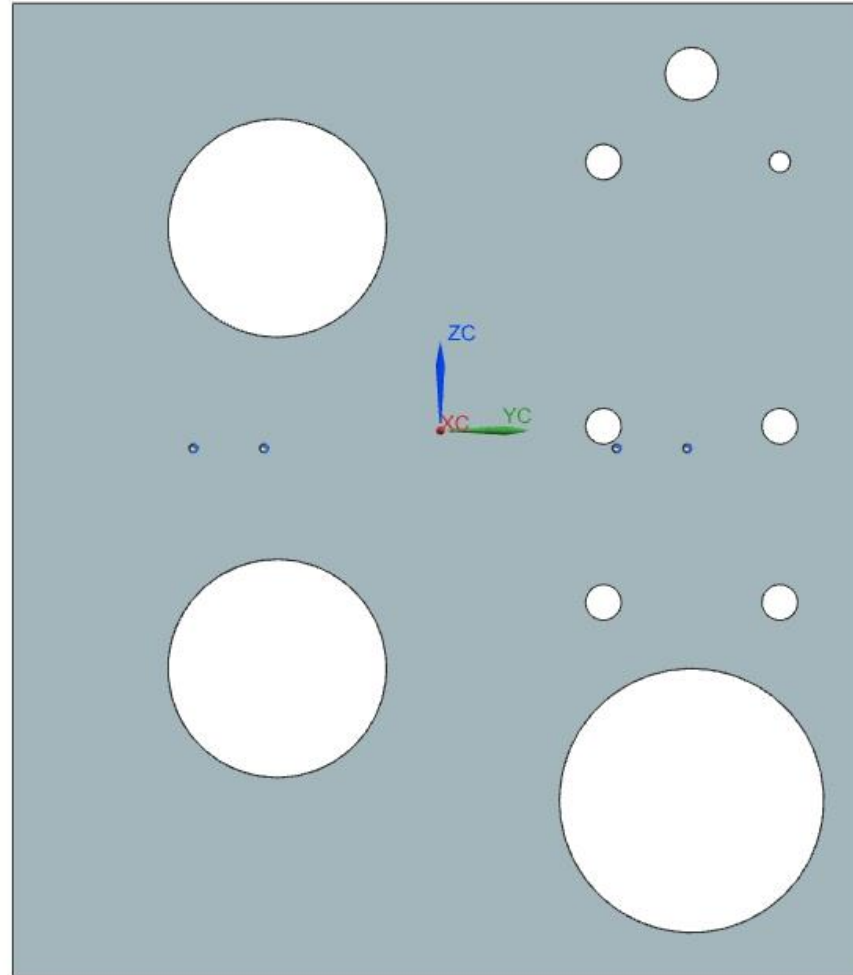


Vacuum Chamber RightSide Wall INSIDE Dimensions

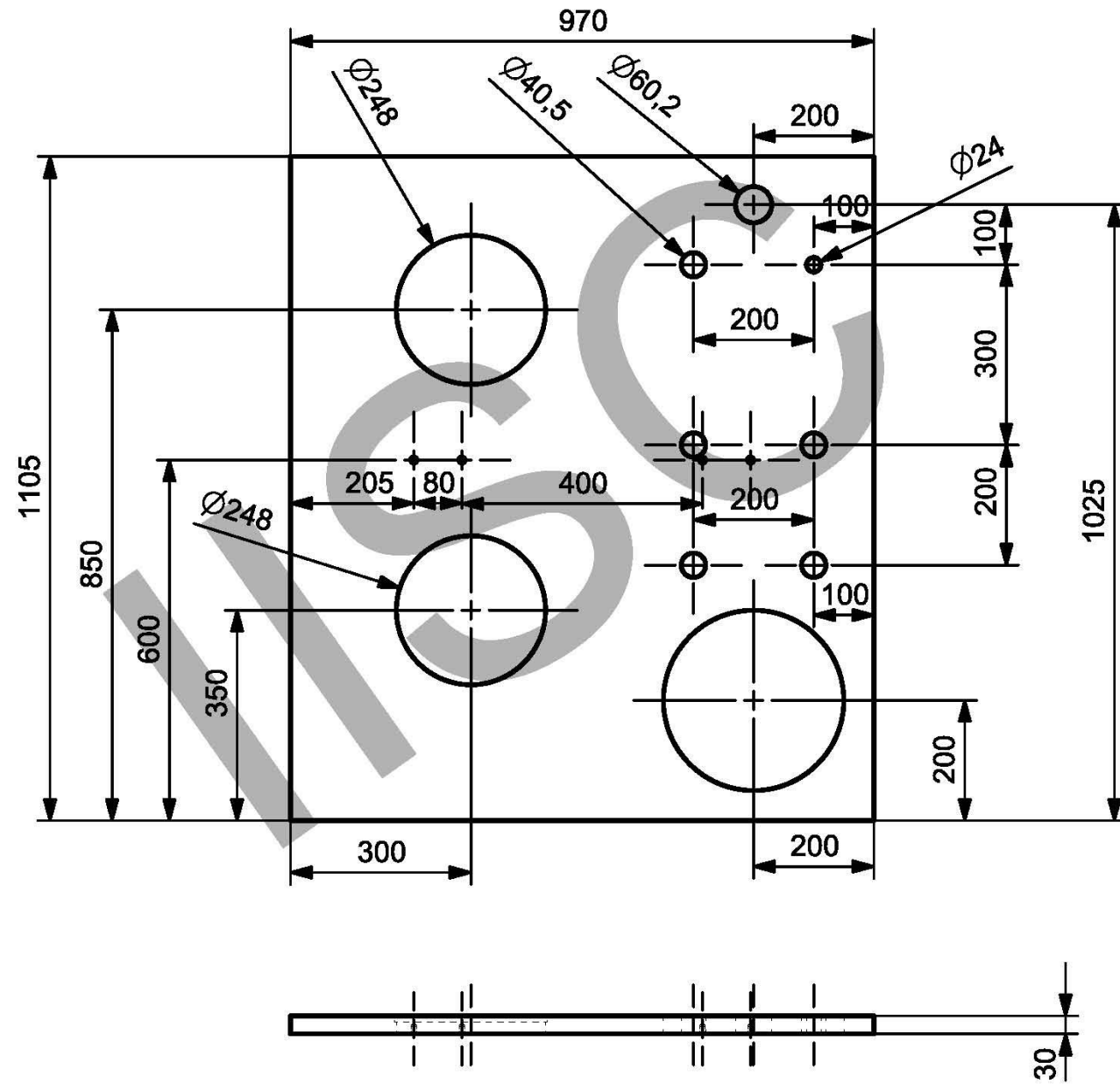


ALL DIMENSIONS ARE IN MM

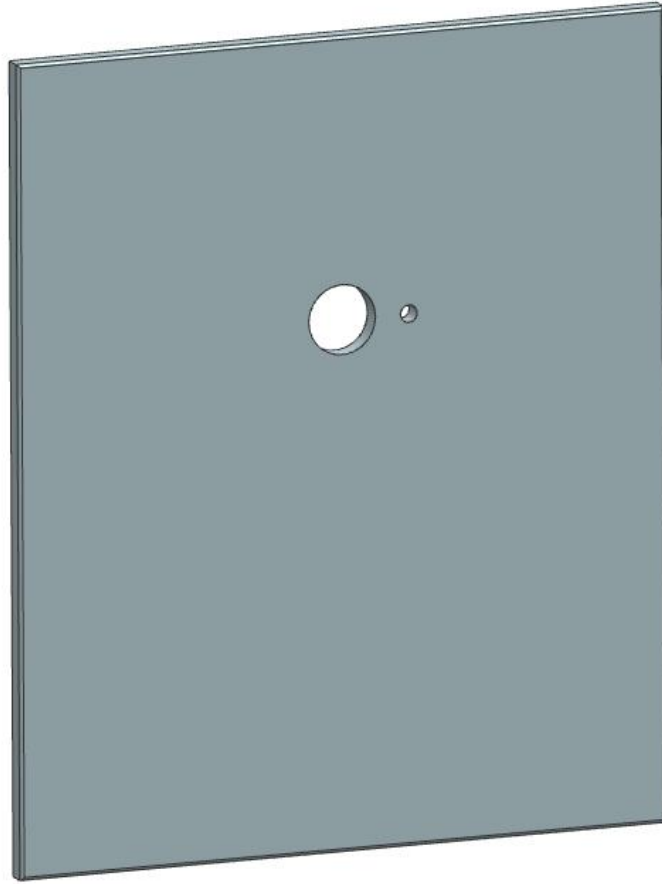
VACUUM CHAMBER BACK SIDE PLATE



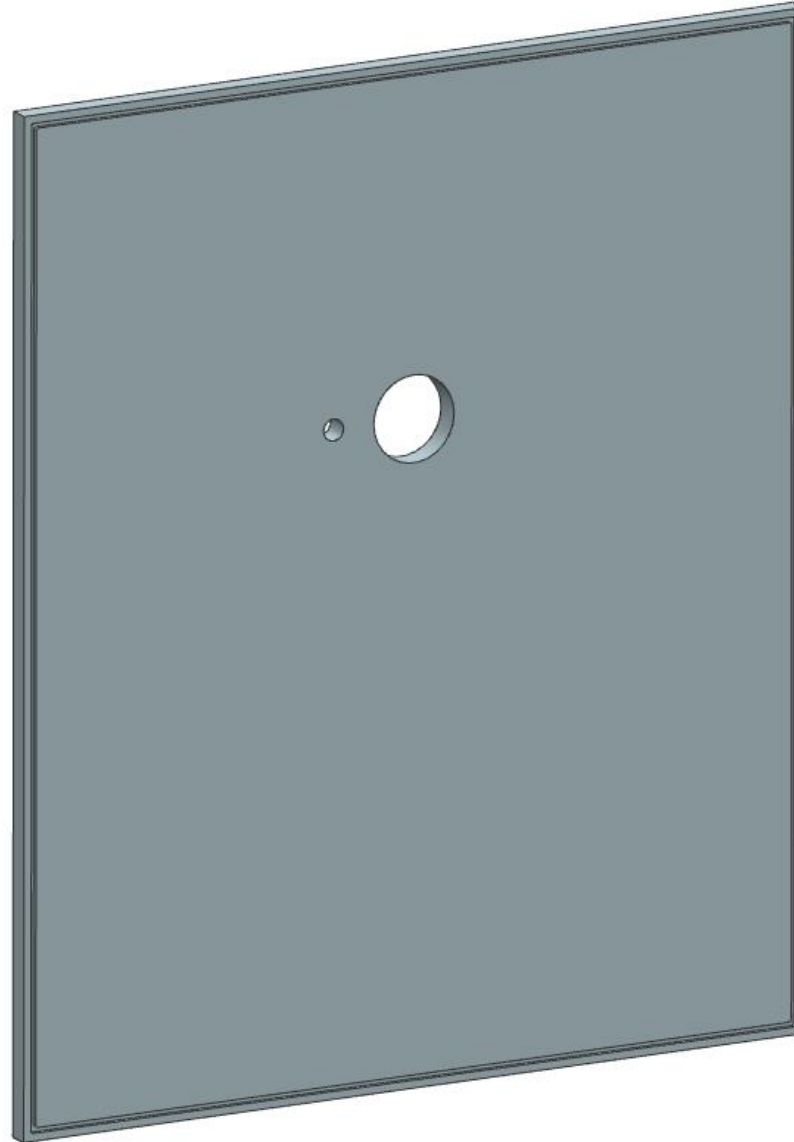
VCAUUM CHAMBER BACK SIDE DIMENSIONS



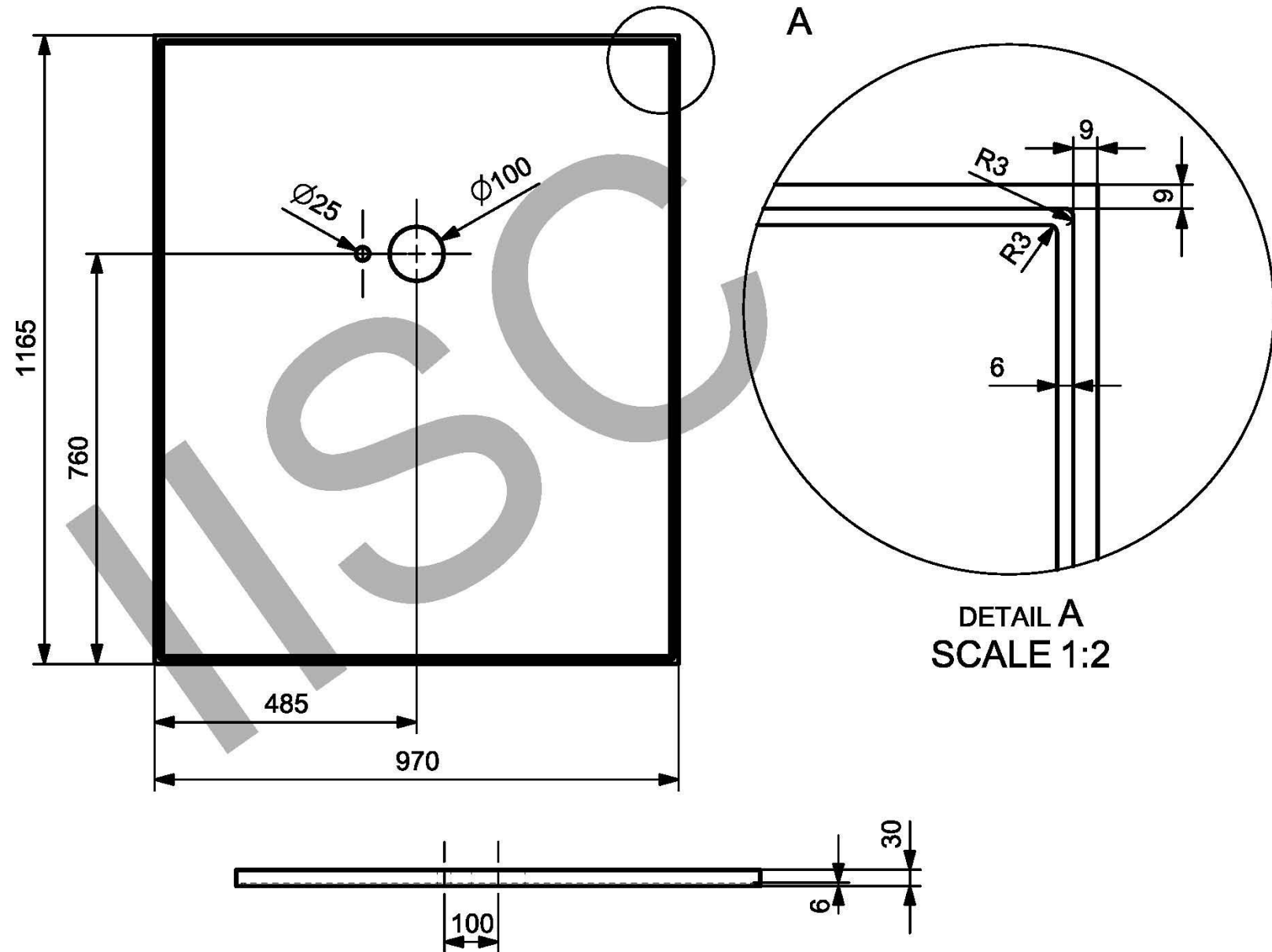
VC DOOR FRONT VIEW



VC DOOR BACK VIEW



VCAUUM CHAMBER DOOR INSIDE DIMENSIONS



Waterline representation for VC Wall

Specifications:-

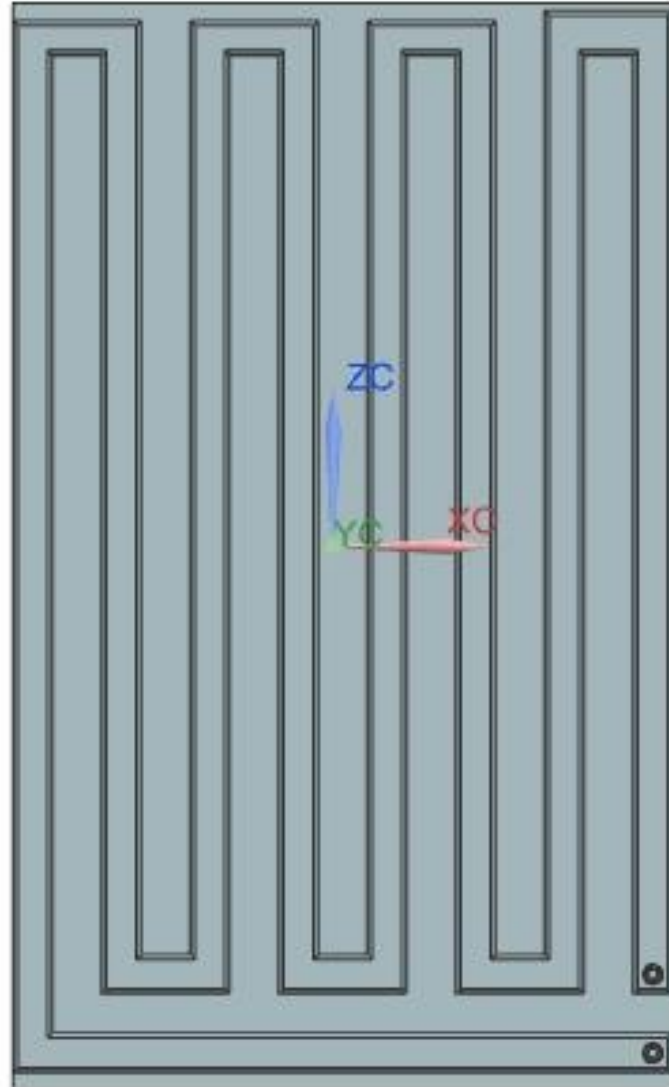
Tube width = 40mm

Depth = 10mm

Sheet thickness = 2mm

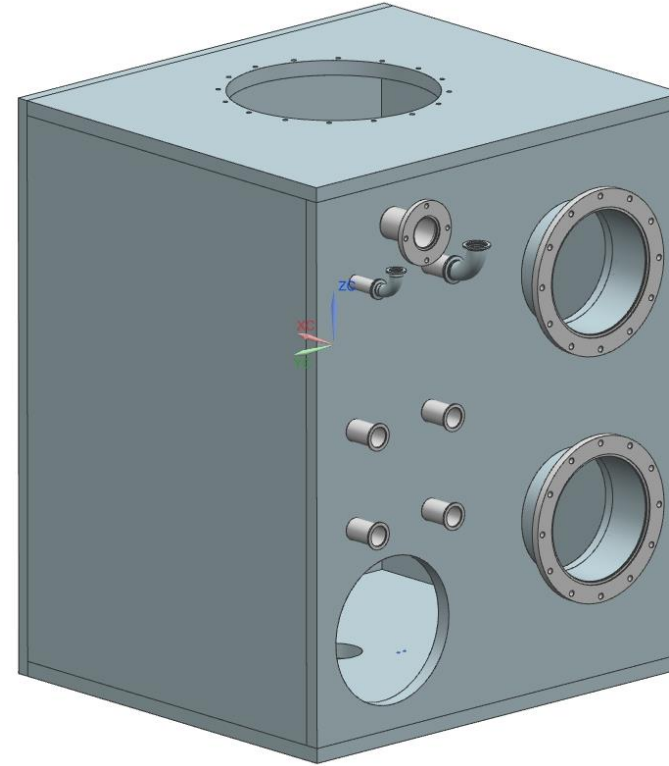
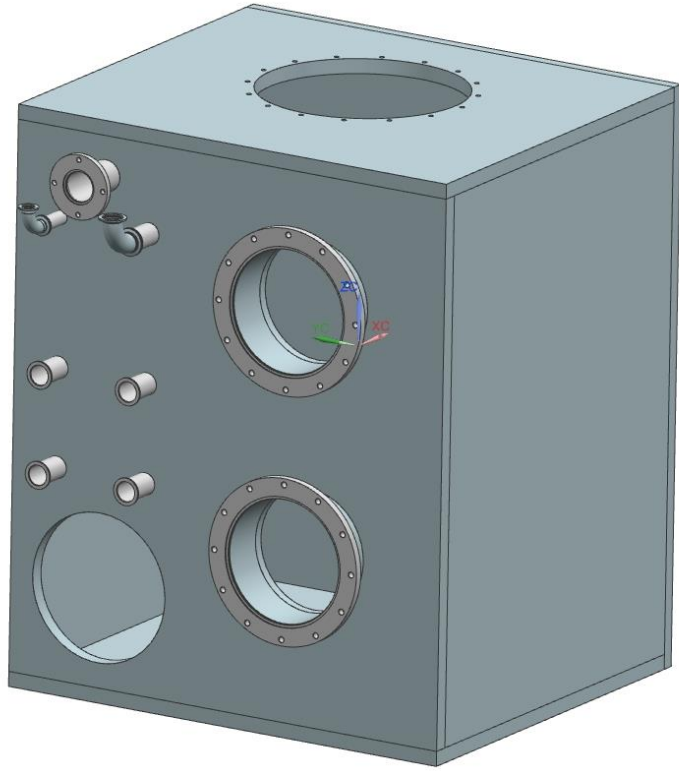
40mm gap to be maintained from
Edges.

Threaded Bolt Push in connectors
For inlet and outlet ports

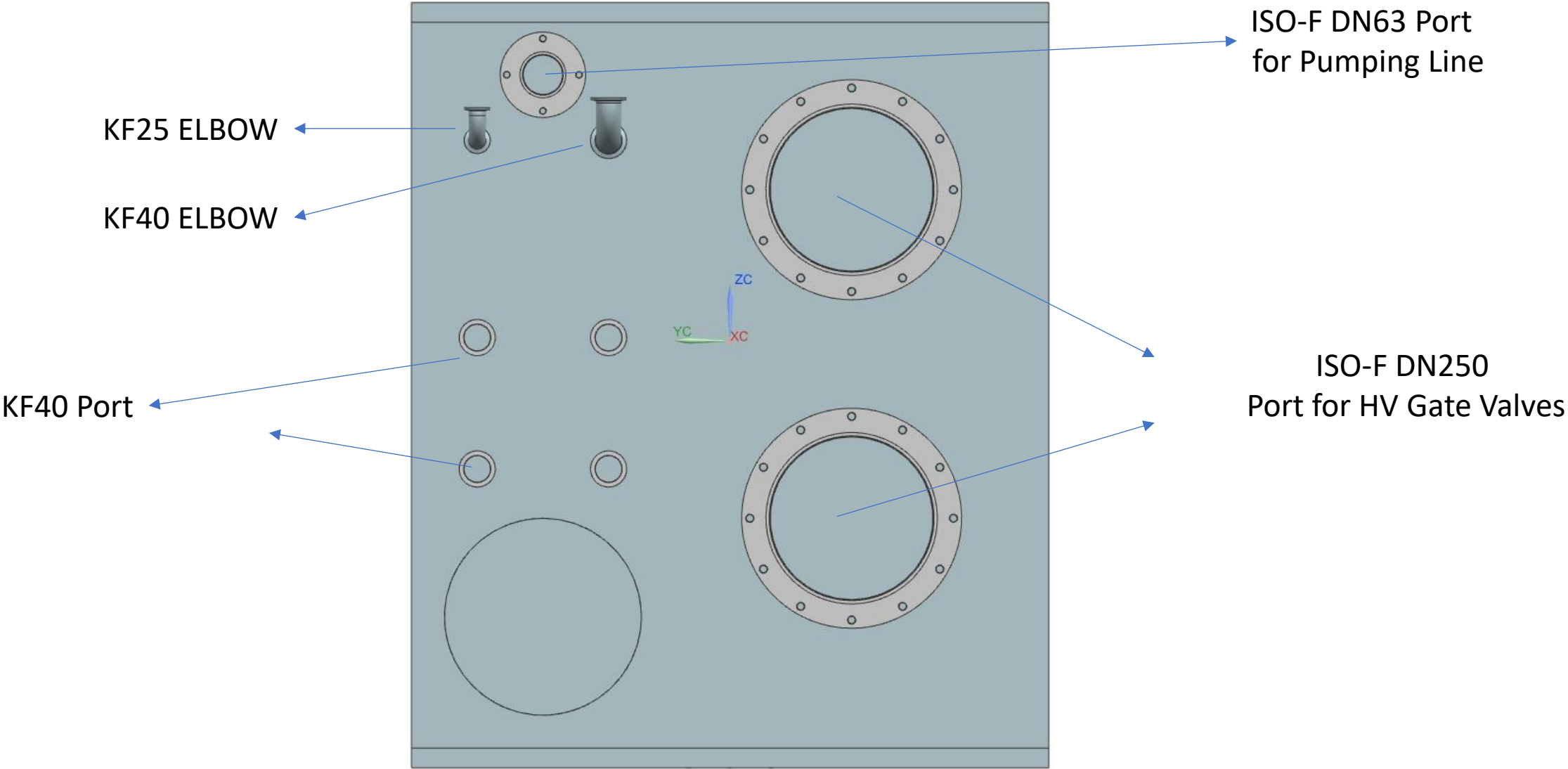


Vacuum Chamber Plumbing Details

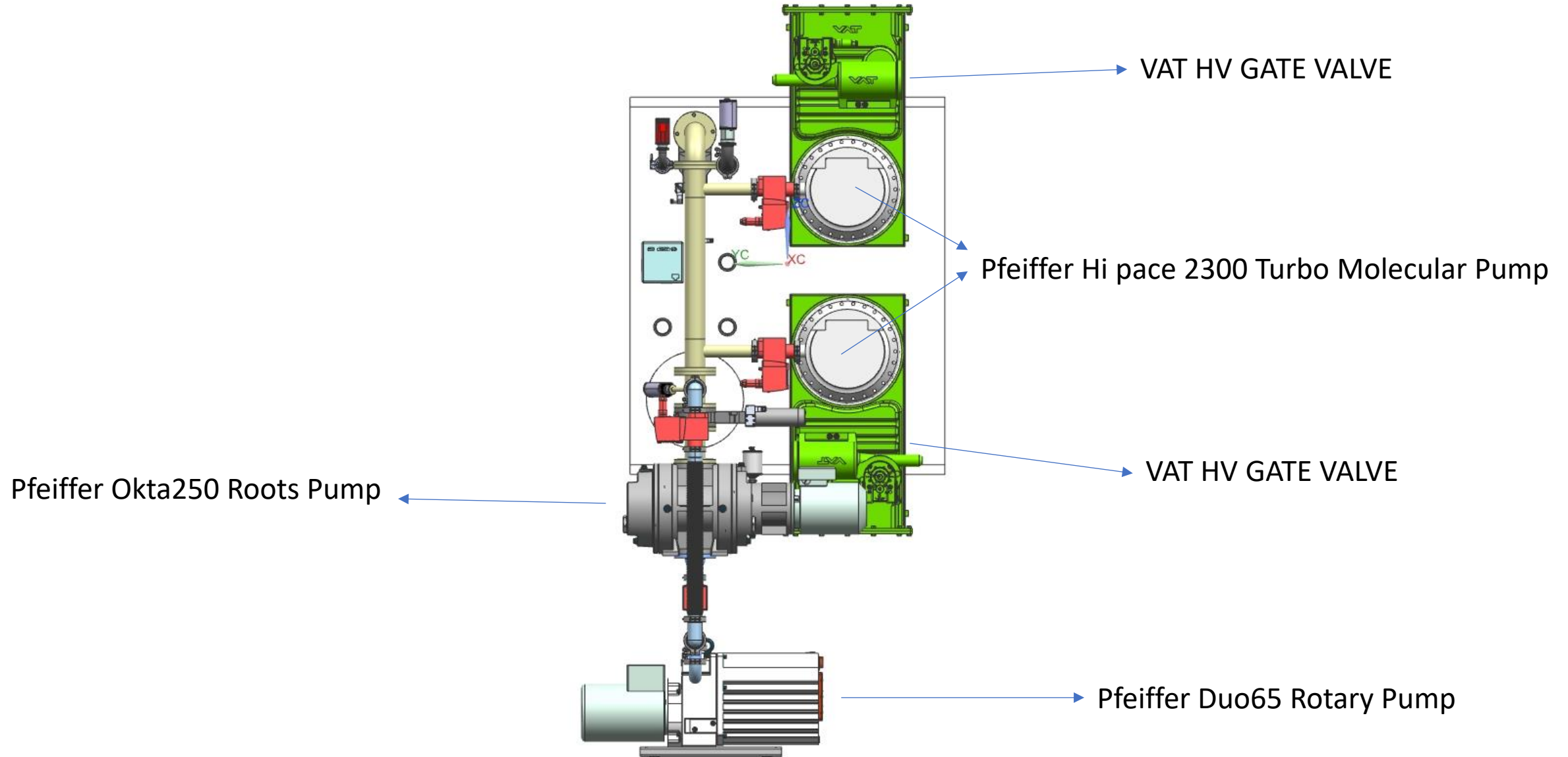
Vacuum Chamber Flanges & Ports



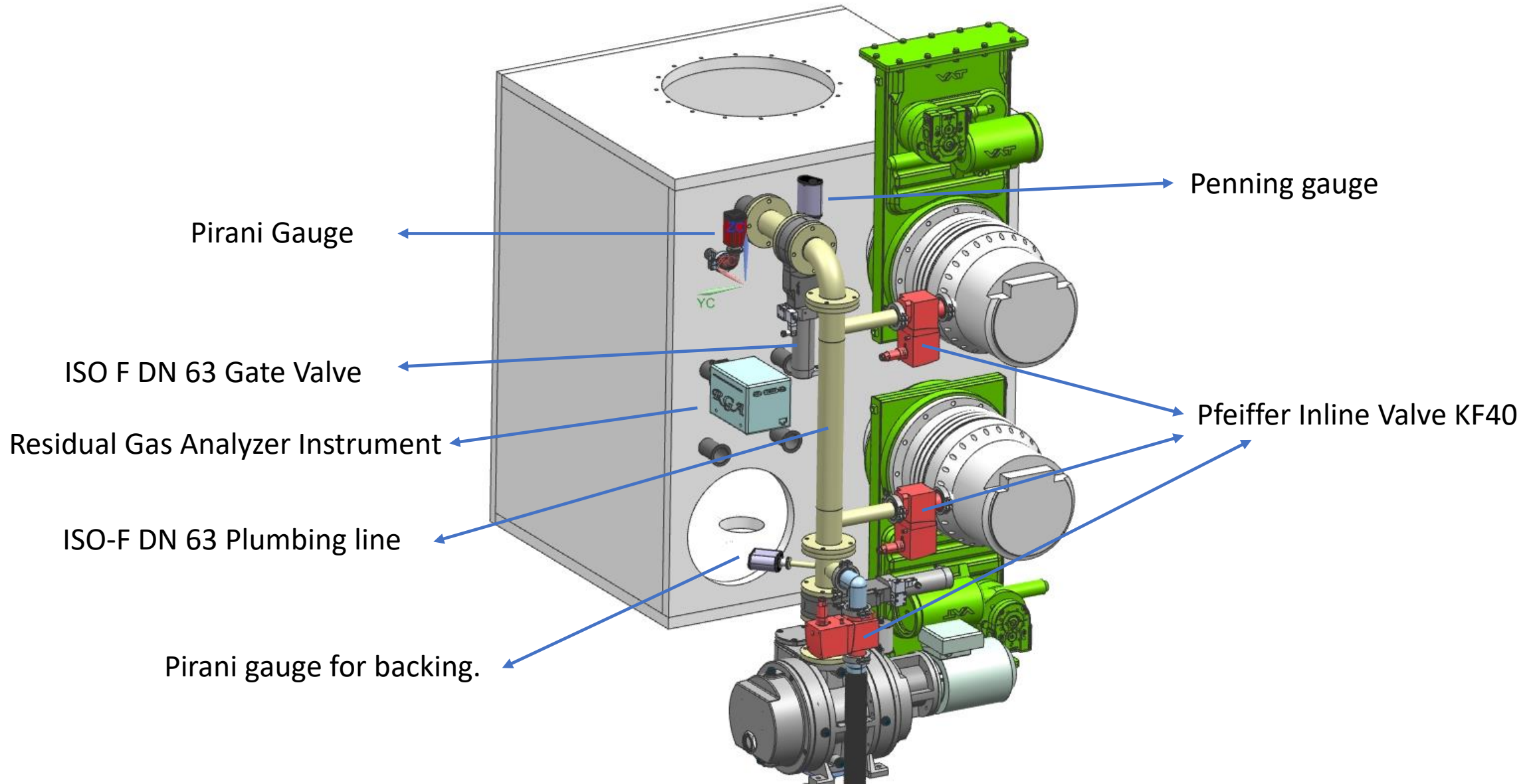
Port Details



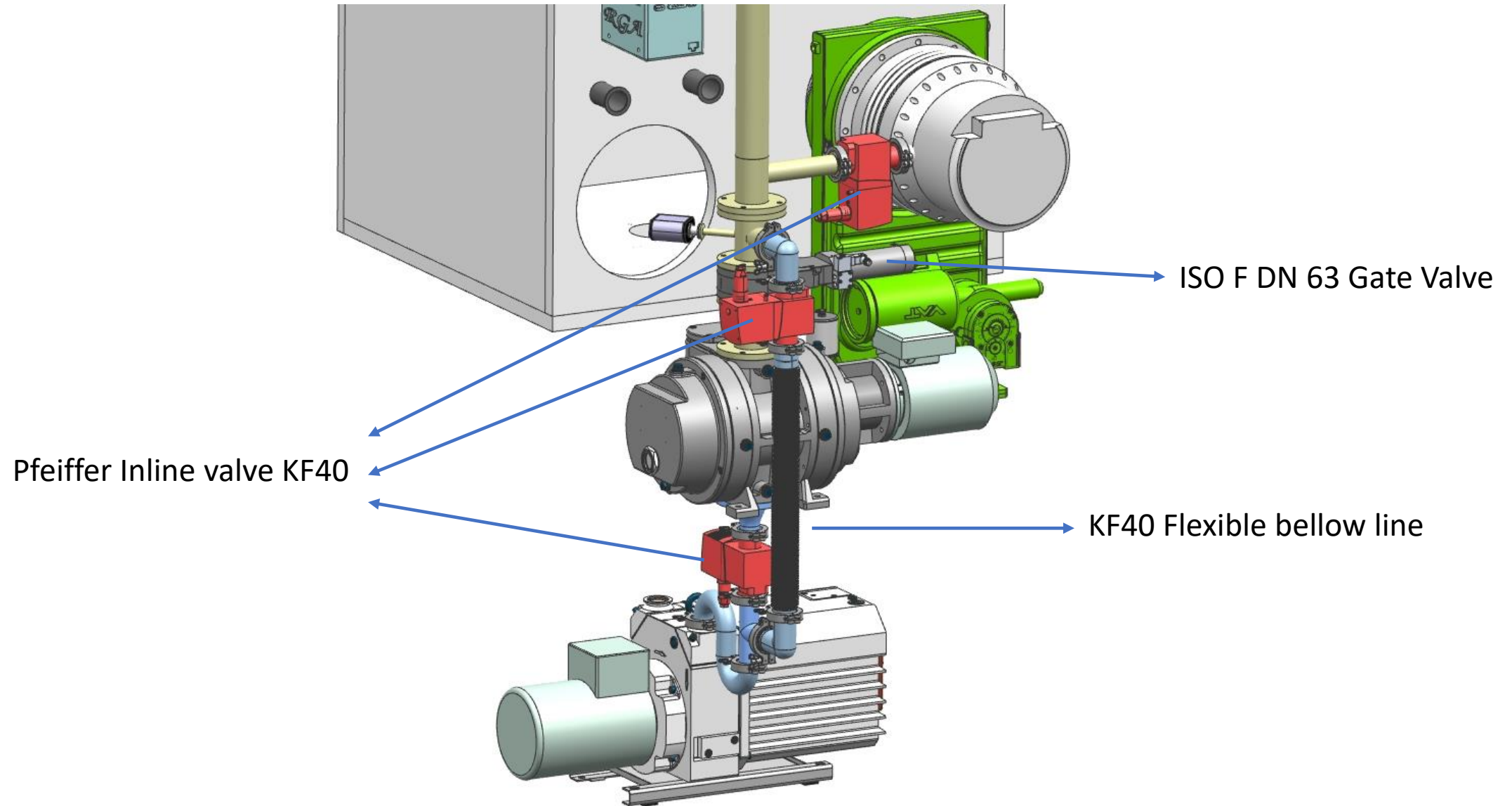
Vacuum Chamber Plumbing Line Details



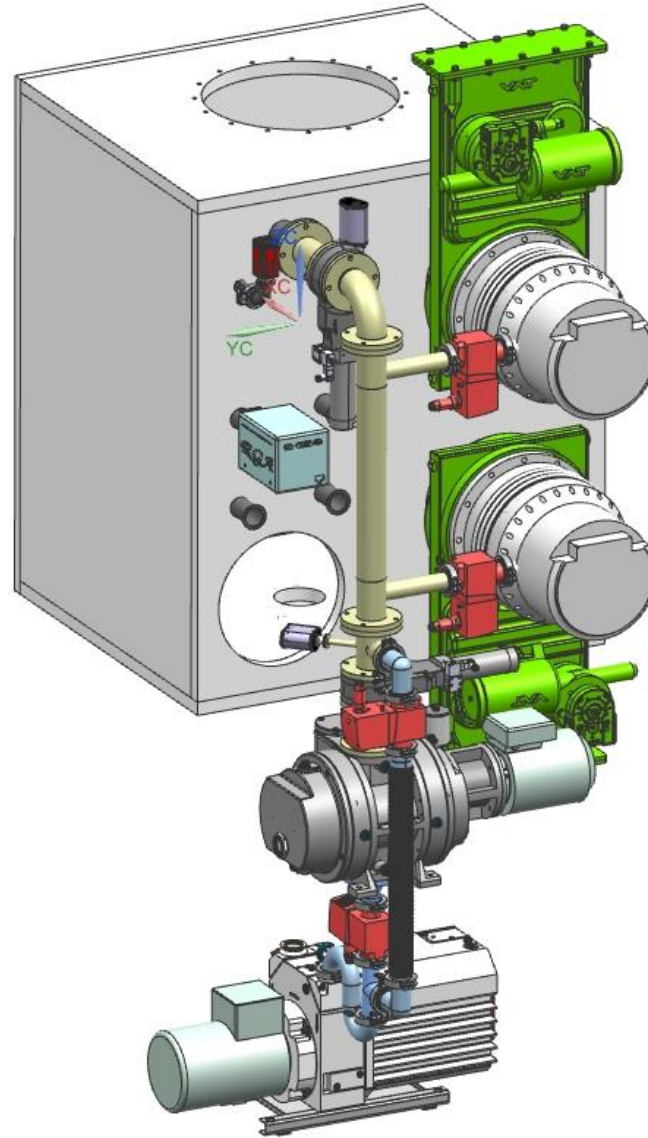
Vacuum Chamber Plumbing Line Details



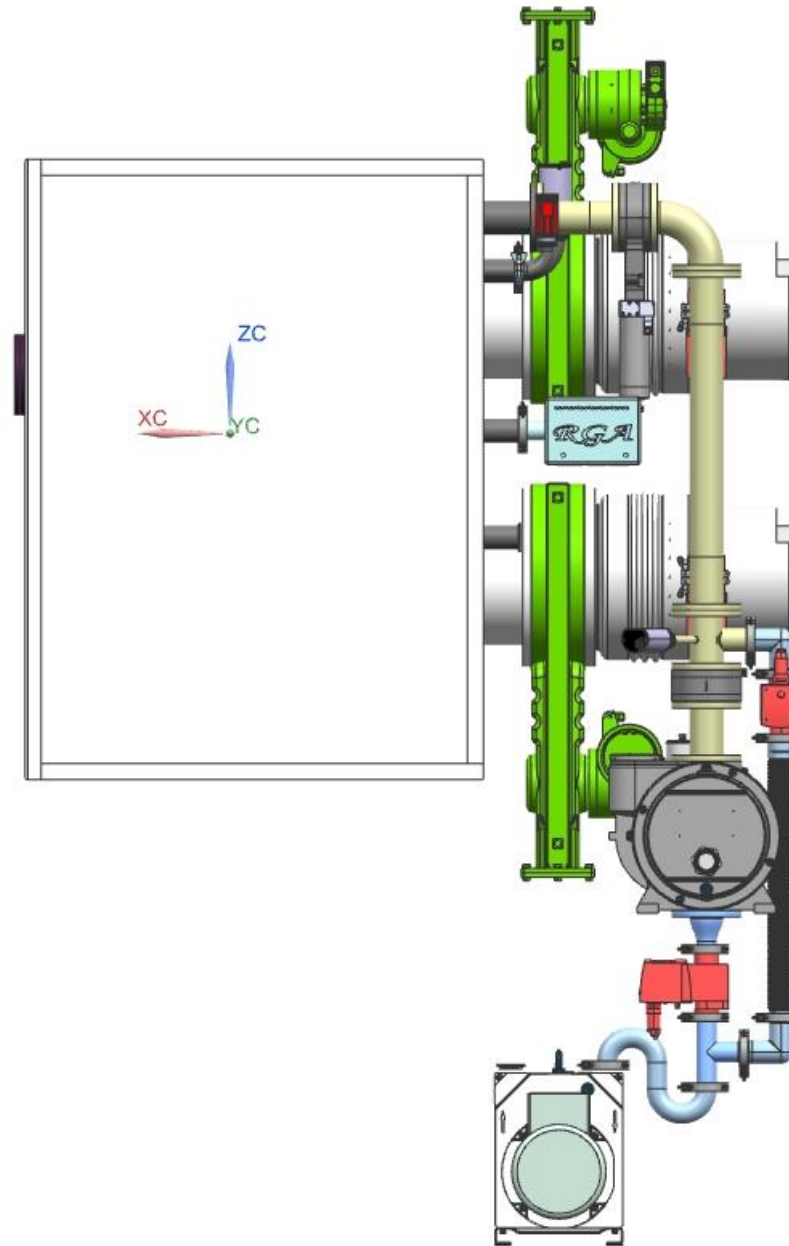
Vacuum Chamber Plumbing Line Details



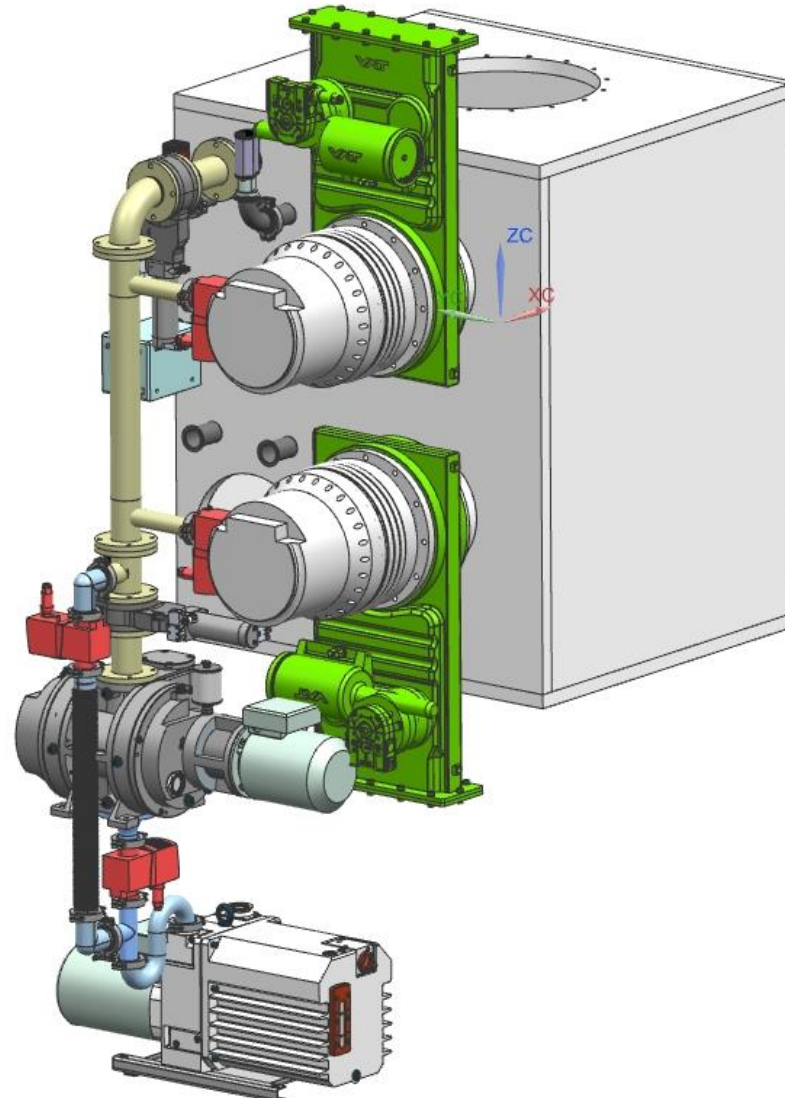
Vacuum Chamber Plumbing Line Isometric view



Vacuum Chamber Plumbing Line side view



Vacuum Chamber Plumbing Line Isometric view



Vacuum Chamber Plumbing Line Isometric view

