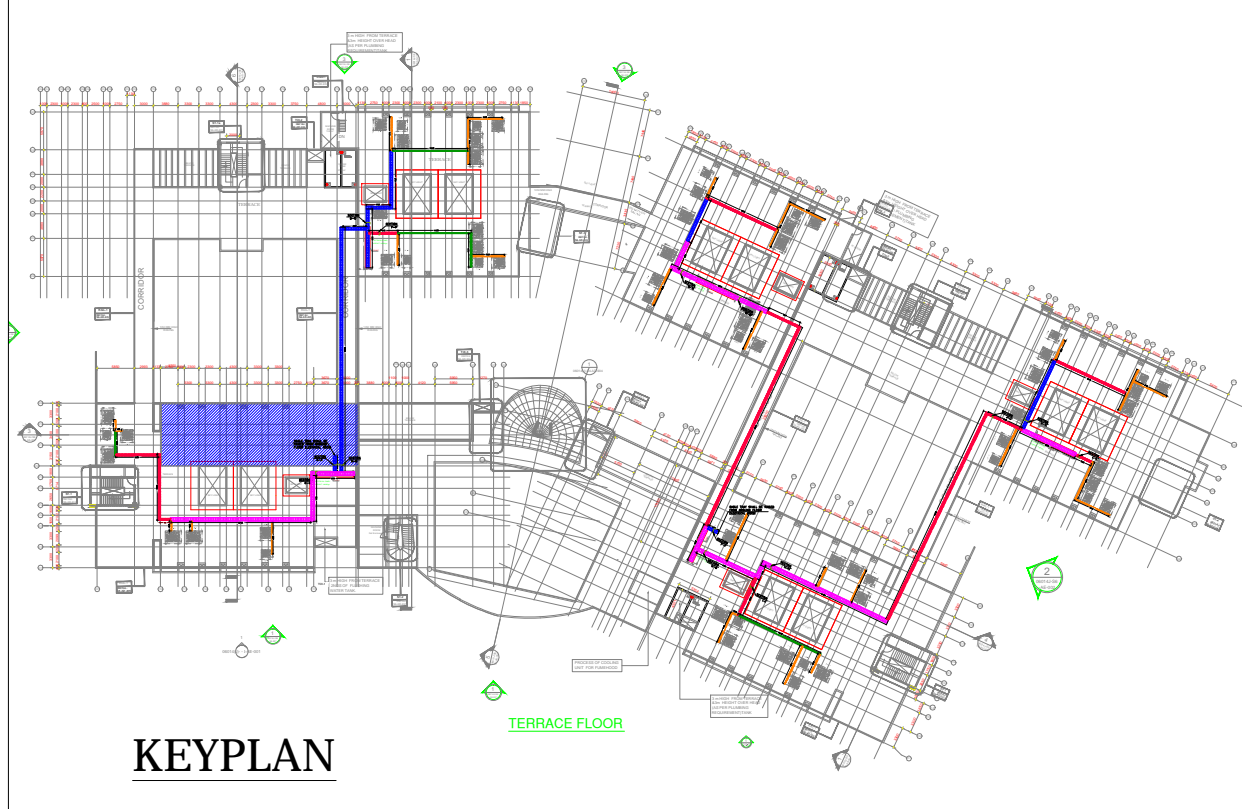
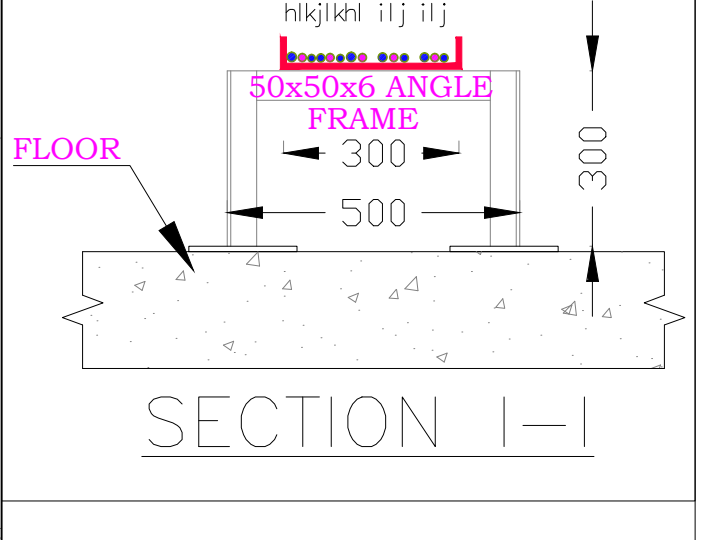
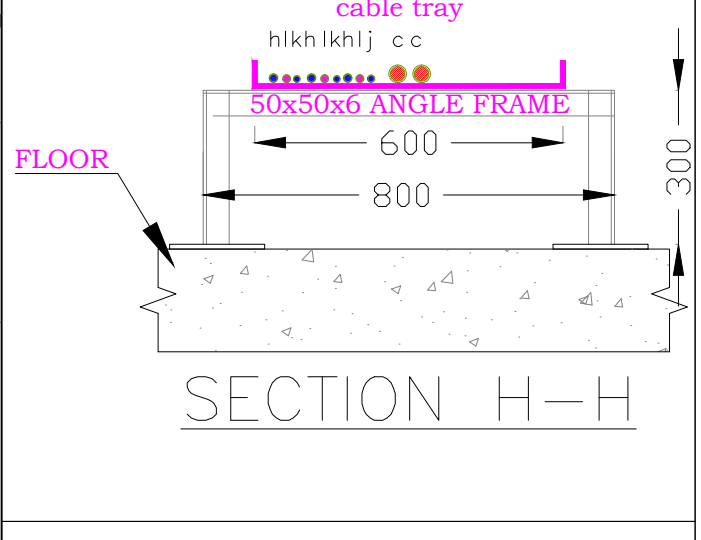
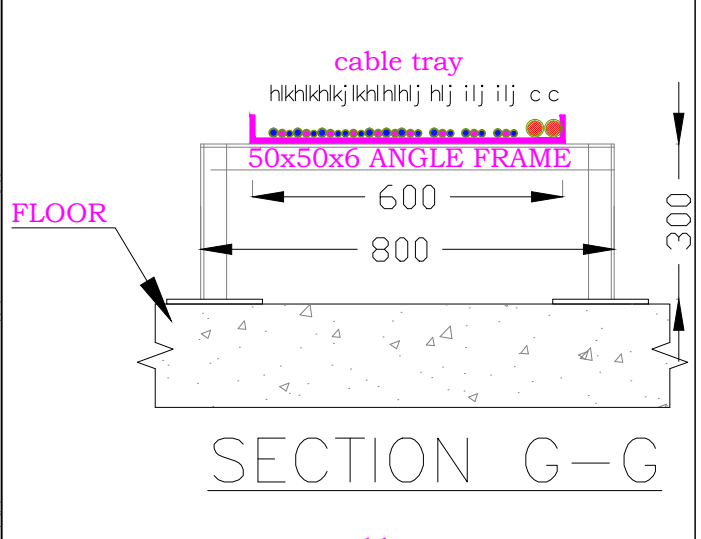
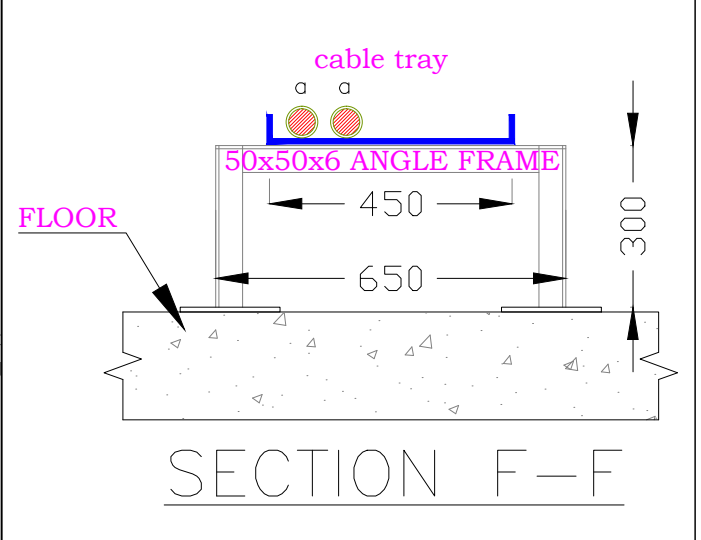



SYMBOL	CABLE SIZE(AL)	CABLE DIA(mm)
(a)	3.5C 300SQMM XLPE AR AL PVC CABLE	59.3
(b)	3.5C 95SQMM XLPE AR AL PVC CABLE	37.6
(c)	3.5C 70SQMM XLPE AR AL PVC CABLE	34
(d)	3.5C 25SQMM XLPE AR AL PVC CABLE	23.8
(e)	3C 16SQMM XLPE AR AL PVC CABLE	19.7

	CABLE SIZE(CU)	CABLE DIA(mm)
(f)	4C 10SQMM XLPE AR CU PVC CABLE	21.8
(g)	4C 6SQMM XLPE AR CU PVC CABLE	18.5
(h)	3C 6SQMM XLPE AR CU PVC CABLE	17.4
(i)	3C 4SQMM XLPE AR CU PVC CABLE	16.1
(j)	3C 2.5SQMM XLPE AR CU PVC CABLE	14.5
(k)	3C 1.5SQMM XLPE AR CU PVC CABLE	13.6
(l)	5C 1.5SQMM XLPE AR CU PVC CABLE	15.2



LEGEND FOR ELECTRICAL CABLE TRAY-C BOTTOM:			
SLNO	SYMBOL	DESCRIPTION	QTY IN MTR
01		100MM HOT DIP PERFORATED CABLE TRAY WITH COVER	35
02		150MM HOT DIP PERFORATED CABLE TRAY WITH COVER	15
03		300MM HOT DIP PERFORATED CABLE TRAY WITH COVER	8
04		450MM HOT DIP LADDER TYPE CABLE TRAY WITH COVER	50
05		600MM HOT DIP LADDER TYPE CABLE TRAY WITH COVER	45

CLIENT:



Indian Institute of Science
Bangalore

INDIAN INSTITUTE OF SCIENCE,
BANGALORE.


PROJECT:

LABORATORY INTERIOR WORKS FOR
CHEMICAL SCIENCES BUILDING.

Architect:

Chandru Iyer Associates
NO 69, 15TH "A" CROSS ,6th MAIN
MALLESWARAM
BANGALORE 560 055.
TEL - 80- 23368319

Consultant:



M J ASSOCIATES
PROJECT ENGINEERING CONSULTANTS
#45, 1st Floor, 8th Main road,
Vasanth nagar, Bangalore-560 052
Tele:-22284583, 22204636
E-mail:-projects@mjassociates.in/www.mjassociates.in

DRAWING TITLE:

CABLE TRAY LAYOUT
FOR 'C' BOTTOM TERRACE FLOOR

DRAWING STATUS : TENDER DRAWINGS

DRAWN	CHETAN
CHECKED	SANDEEPA
APPROVED	MJA
DATE	23.03.2019
JOB NO	MJ - 324
DWG NO:	ELE- 2461 (e)
SCALE	NTS
REVISION	TR 0