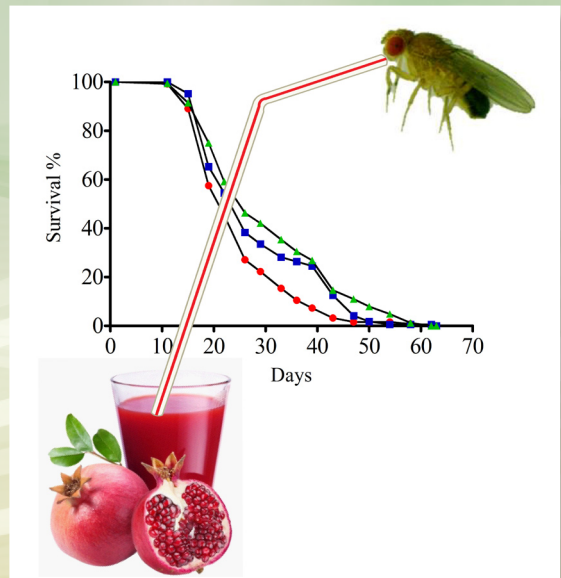
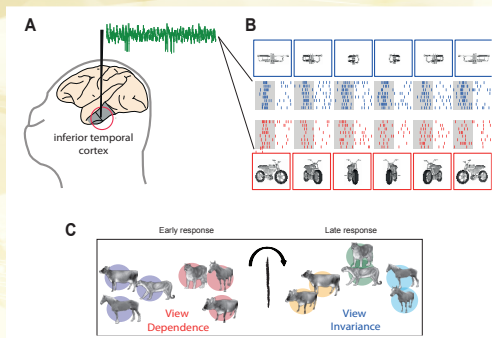


The spectacular evolutionary radiation of bush frogs in the Western Ghats. This evolutionary radiation consists of two clades, a smaller one on the north and a larger one on the south, divided by a biogeographic barrier, the Palghat Gap. The study also led to the discovery of a large number of new lineages



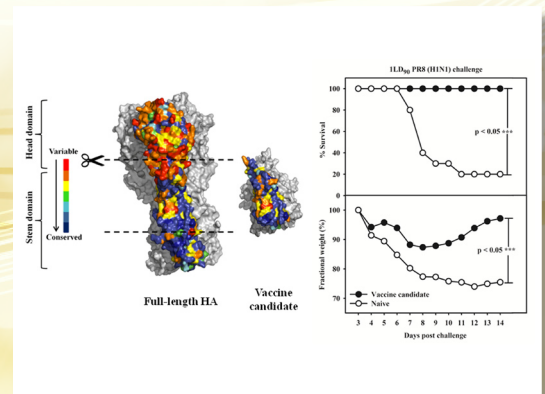
The fruit fly (*Drosophila melanogaster*) was used as a model to study the effects of pomegranate juice on the quality of life. Regular intake of pomegranate juice can significantly increase its life span, the study found



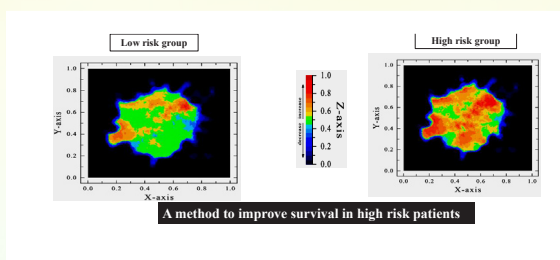
A. A recording from the monkey brain highlighting the inferotemporal cortex

B. The response of a single neuron in the inferotemporal cortex, showing invariant response to all 3D views of two objects

C. A schematic of a transition observed in these neurons, wherein responses are initially modulated by view and only later become invariant to 3D view

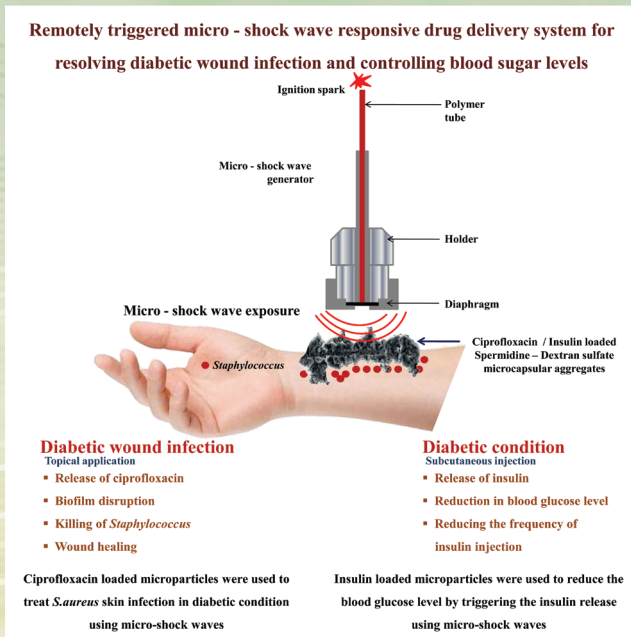


'Stemming' flu by design. The conserved stem-domain of influenza hemagglutinin (HA) was engineered in the designed vaccine candidate to enhance the breadth of protection. The molecule provides robust protection against mortality (survival) and morbidity (weight loss) in mice



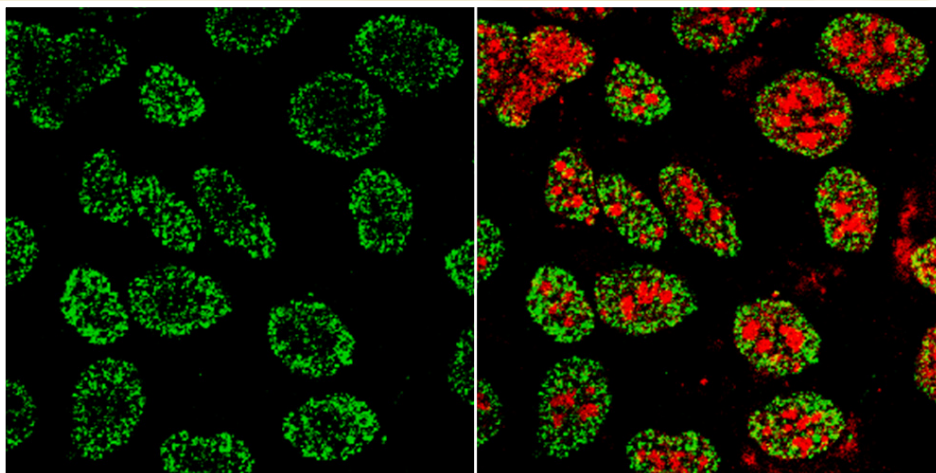
A genetic test to predict risk of developing a brain tumor. The test can classify patients into low and high risk categories



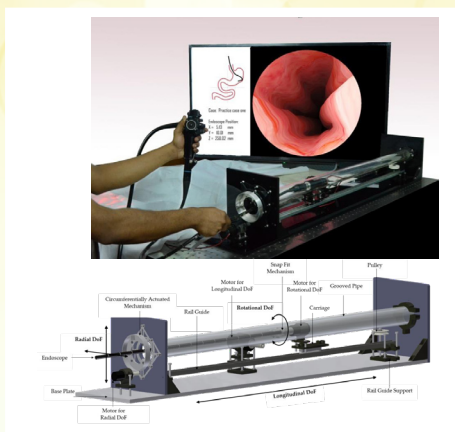


A handheld device to detect a suite of markers related to diabetes and its complications

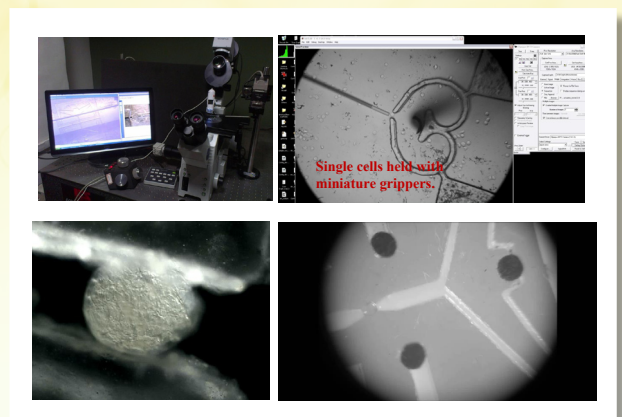
A needleless drug delivery system, particularly to deliver insulin, using shock wave technology



Gamma H2AX foci showing DNA breaks in breast cancer cells



An endoscopy simulator for training and surgery



The mechanical characterization of cells for disease diagnosis